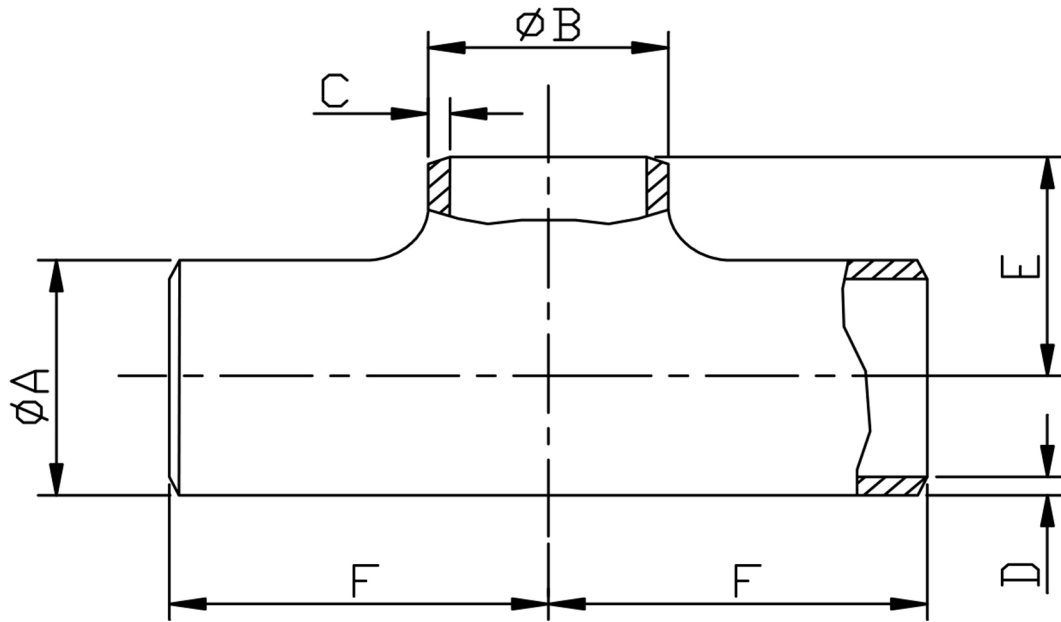


REDUCING TEE SCH40 304/L



SIZE	PART No	A OD	B OD	C	D	E	F	Kg/100
3/4 X 1/2	BRT1208/4-304	26.6	21.3	2.77	2.87	28.7	28.7	18.0
1 X 1/2	BRT1608/4-304	33.4	21.3	2.77	3.38	38.1	38.1	23.4
1 X 3/4	BRT1612/4-304	33.4	26.6	2.87	3.38	38.1	38.1	24.4
1-1/4 X 1	BRT2016/4-304	42.1	33.4	3.38	3.56	47.8	47.8	44.1
1-1/2 X 1	BRT2416/4-304	48.3	33.4	3.38	3.68	57.2	57.2	60.0
1-1/2 X 1-1/4	BRT2420/4-304	48.3	42.1	3.56	3.68	57.2	57.2	62.9
2 X 1	BRT3216/4-304	60.3	33.4	3.38	3.91	50.8	63.5	114.0
2 X 1-1/4	BRT3220/4-304	60.3	42.1	3.56	3.91	57.2	63.5	118.0
2 X 1-1/2	BRT3224/4-304	60.3	48.3	3.68	3.91	60.5	63.5	123.0
2-1/2 X 1-1/2	BRT4024/4-304	73.0	48.3	3.68	5.16	66.8	76.2	208.0
2-1/2 X 2	BRT4032/4-304	73.0	60.3	3.91	5.16	69.9	76.2	212.0
3 X 1-1/2	BRT4824/4-304	88.9	48.3	3.68	5.49	73.2	79.5	298.0
3 X 2	BRT4832/4-304	88.9	60.3	3.91	5.49	76.2	85.9	301.0
3 X 2-1/2	BRT4840/4-304	88.9	73.0	5.16	5.49	82.6	85.9	315.0
4 X 2	BRT6432/4-304	114.3	60.3	3.91	6.02	88.9	104.9	508.0
4 X 2-1/2	BRT6440/4-304	114.3	73.0	5.16	6.02	95.3	104.9	522.0
4 X 3	BRT6448/4-304	114.3	88.9	5.49	6.02	98.6	104.9	527.0
5 X 3	BRT8048/4-304	141.3	88.9	5.49	6.55	111.3	124.0	813.0
5 X 4	BRT8064/4-304	141.3	114.3	6.02	6.55	117.6	124.0	836.0
6 X 3	BRT9648/4-304	168.3	88.9	5.49	7.11	124.0	143.0	1192.0
6 X 4	BRT9664/4-304	168.3	114.3	6.02	7.11	130.3	143.0	1210.0
6 X 5	BRT9680/4-304	168.3	141.3	6.55	7.11	136.7	143.0	1234.0

*Conforming to ASTM A403, ANSI B16.9, ANSI B16.28
 *304/L Stainless steel Welded
 *Schedule 40S Wall thickness
 *Sizes 1/2" to 6" Nominal Bore

DIMENSIONS SUBJECT TO CHANGE, PLEASE CONTACT US IF CRITICAL