

SIZE	CODE			DIMENSIONS		
	BSP	NPT	SW	A	B	KG EACH
1/8	HS02	HS02N	HS02SW	15	8	0.01
1/4	HS04	HS04N	HS04SW	18.5	11	0.02
3/8	HS06	HS06N	HS06SW	21.3	12	0.02
1/2	HS08	HS08N	HS08SW	26.6	15	0.04
3/4	HS12	HS12N	HS12SW	31.8	17	0.05
1	HS16	HS16N	HS16SW	39.5	20	0.10
1-1/4	HS20	HS20N	HS20SW	48.3	22	0.15
1-1/2	HS24	HS24N	HS24SW	54.5	22	0.18
2	HS32	HS32N	HS32SW	66.2	26	0.25
2-1/2	HS40	-	HS40SW	82	30	0.38
3	HS48	-	HS48SW	95	33	0.49
4	HS64	-	HS64SW	121	39	0.83

NERO's range of 150lb fittings are available threaded BSP and NPT, or with Socket weld end connections. They are made from high quality investment castings to ISO4144 or above.

BSP threads are to ISO 228-1 and 7-1

NPT threads are to ANSI B2.1

Made from 316 (CF8M) stainless steel

TABLE 1: PRESSURE-TEMPERATURE RATING

TEMPERATURE (°C)	NO-SHOCK MAXIMUM WORKING PRESSURE (Bar)
-20 to 40	50
100	50
150	35
200	25
220	20

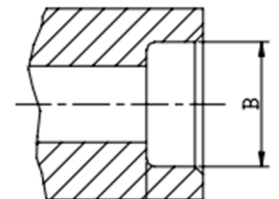
Note 1 Pressure for Intermediate temperatures may be determined by the interpolation method

Note 2 Temperatures indicated are those of the Internal fluid

Note 3 Piping loads, stresses And moments are not taken into account

SIZE	B
1/8	10.7MM
1/4	14MM
3/8	17.5MM
1/2	21.6MM
3/4	27MM
1	33.8MM
1-1/4	42.4MM
1-1/2	48.5MM
2	61.2MM
2-1/2	74.19MM
3	90.17MM
4	115.8MM

Socket weld bore



5 STAR ★★★★★
CUSTOMER SERVICE



SAME DAY DISPATCH -
ORDERS PLACED BEFORE 4:30PM



WEALTH OF
INDUSTRY KNOWLEDGE



ONE OF THE LARGEST
STOCKISTS IN THE UK