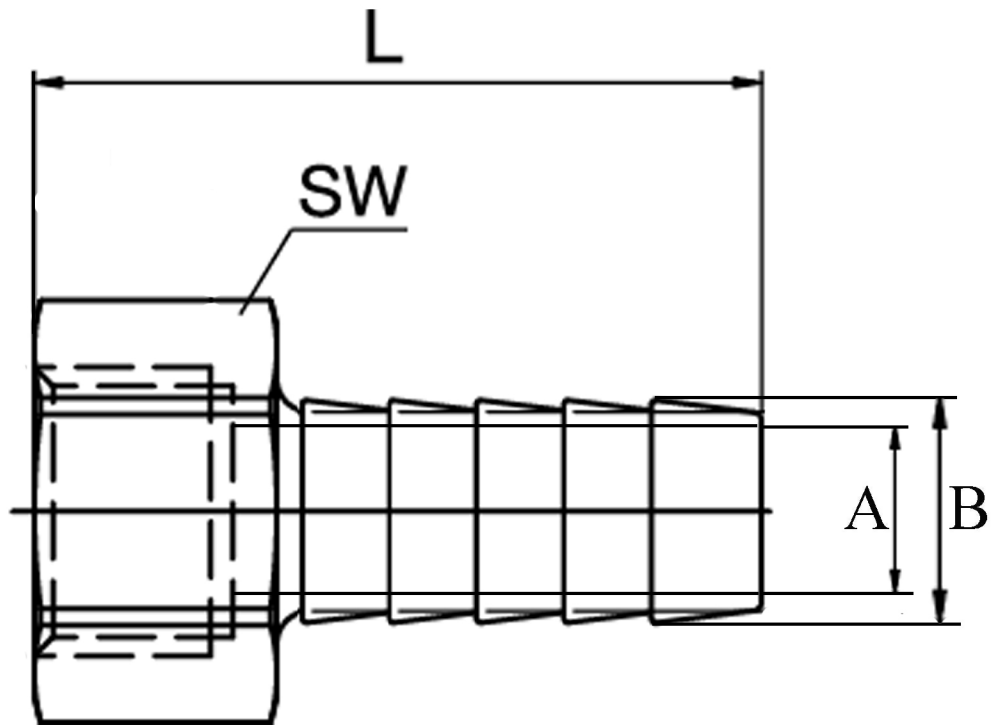


FEMALE HOSETAIL BSPP 316L



SIZE THREAD	SIZE B HOSE	PART No	A	L	SW	Kg/100
1/4	6.30	FHT04	3.0	42.5	19.0	3.3
3/8	9.50	FHT06	6.5	47.0	21.4	5.7
1/2	12.70	FHT08	7.8	61.7	26.7	6.05
3/4	19.05	FHT12	15.0	58.0	31.6	10.05
1	25.40	FHT16	19.3	66.5	37.8	21.25
1-1/4	31.80	FHT20	26.8	69.2	47.5	24.75
1-1/2	38.10	FHT24	32.5	87.1	55.0	38.15
2	50.80	FHT32	43.4	90.5	66.0	60.5

*Pressure rating up to 20 BAR (300 PSI)

*Female threads are BSPP (Parallel) to ISO 228-1

*316 CF8M stainless steel

*Investment castings

*Sizes 1/4" to 2"

DIMENSIONS SUBJECT TO CHANGE, PLEASE CONTACT US IF CRITICAL