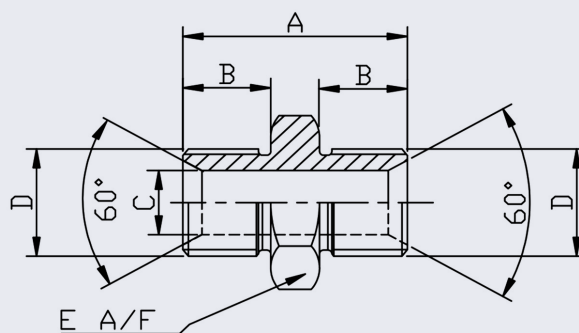
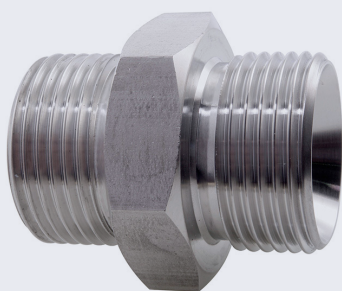


Hexagonal Nipple (BSPP) 316



- NERO's range of Hexagonal Nipples are available in BSPP thread form with a 60° internal cone on the male ends & recessed to accept a Bonded Washer
- Pressure rating up to 200 BAR
- Can be supplied with 2.2 Certificate of Conformity - upon request
- BSPP Male threads are to ISO 228/1
- 60° internal cone to BS 5200

SIZE BSPP (D)	PRODUCT CODE	A	B	C	E (A/F)	KG EACH
1/8	HN02P	21.1	8.1	3.5	14.3	0.013
1/4	HN04P	29.1	11.1	5.1	19.1	0.032
3/8	HN06P	32.1	12.1	8.1	22.2	0.048
1/2	HN08P	38.1	14.1	11.1	28.6	0.088
3/4	HN12P	44.1	16.1	16.6	31.7	0.13
1	HN16P	50.1	19.1	22.2	41.3	0.22
1-1/4	HN20P	54.1	20.1	28.6	50.8	0.36
1-2/2	HN24P	58.1	22.1	33.3	56.4	0.46
2	HN32P	68.1	25.1	46.1	69.8	0.71

**** Dimensions subject to change - Please contact us if critical ****

Other products you might like...

We stock a wide range of Hydraulic Fittings to suit your requirements



We also keep Reducing versions of this fitting + Bonded Washers in our Hydraulic range



TUBES | PIPES | VALVES | FITTINGS | FLANGES