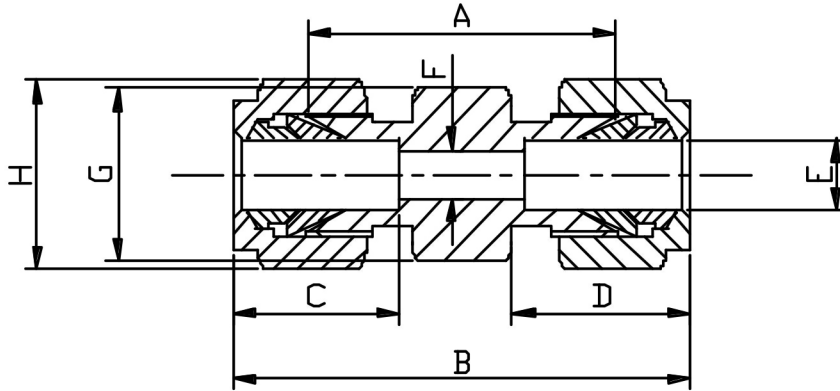


EQUAL UNION (FRACTIONAL)



E TUBE	PART No	A	B	C	D	F	G HEX	H HEX	Kg/100
1/8	2U	22.2	37.3	13.5	16.3	2.4	11.1	11.1	1.5
3/16	3U	24.2	40.1	14.3	16.7	3.2	11.1	12.7	1.7
1/4	4U	26.2	41.3	15.1	17.9	4.8	14.3	14.3	4.0
5/16	5U	28.2	44.9	16.7	19.5	6.4	14.3	15.9	4.9
3/8	6U	30.2	45.2	16.7	19.5	7.1	17.5	17.5	5.8
1/2	8U	31.0	51.6	23.0	21.8	10.3	22.2	22.2	9.8
5/8	10U	31.8	50.8	23.8	21.4	12.7	23.8	25.4	9.9
3/4	12U	33.3	53.2	24.6	21.8	15.9	28.6	28.6	10.5
1	16U	40.5	66.7	31.4	26.6	22.2	38.1	38.1	28.1

*316 Stainless Steel

*Fractional sizes 1/8" to 1"

*Silver plated nuts

DIMENSIONS SUBJECT TO CHANGE, PLEASE CONTACT US IF CRITICAL