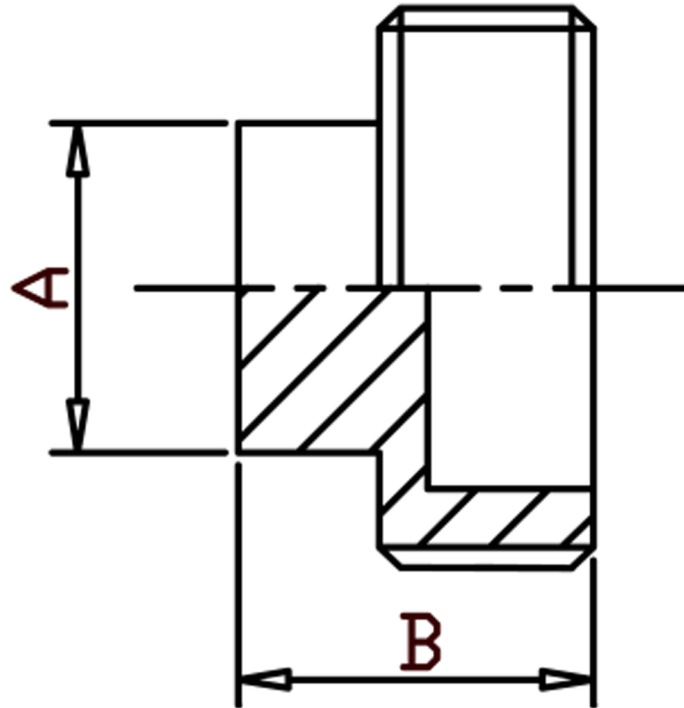


SQUARE HEAD PLUG NPT 316L



SIZE	PART No	A	B	Kg/100
1/8	SP02N	7	15.5	1.15
1/4	SP04N	8	19	1.60
3/8	SP06N	9	18	1.55
1/2	SP08N	10	18.5	2.07
3/4	SP12N	14	21	3.30
1	SP16N	17	24	5.61
1-1/4	SP20N	20	28	9.80
1-1/2	SP24N	23	28	11.50
2	SP32N	28	34	19.95
2-1/2	SP40N	36	38.5	35.20
3	SP48N	40	41.5	51.50
4	SP64N	52	51.5	93.04

*Pressure rating up to 20 BAR (300 PSI)

*Male threads are NPT (Taper) to ANSI B2.1

*316 CF8M stainless steel

*Investment castings

*Sizes 1/8" to 4"

DIMENSIONS SUBJECT TO CHANGE, PLEASE CONTACT US IF CRITICAL