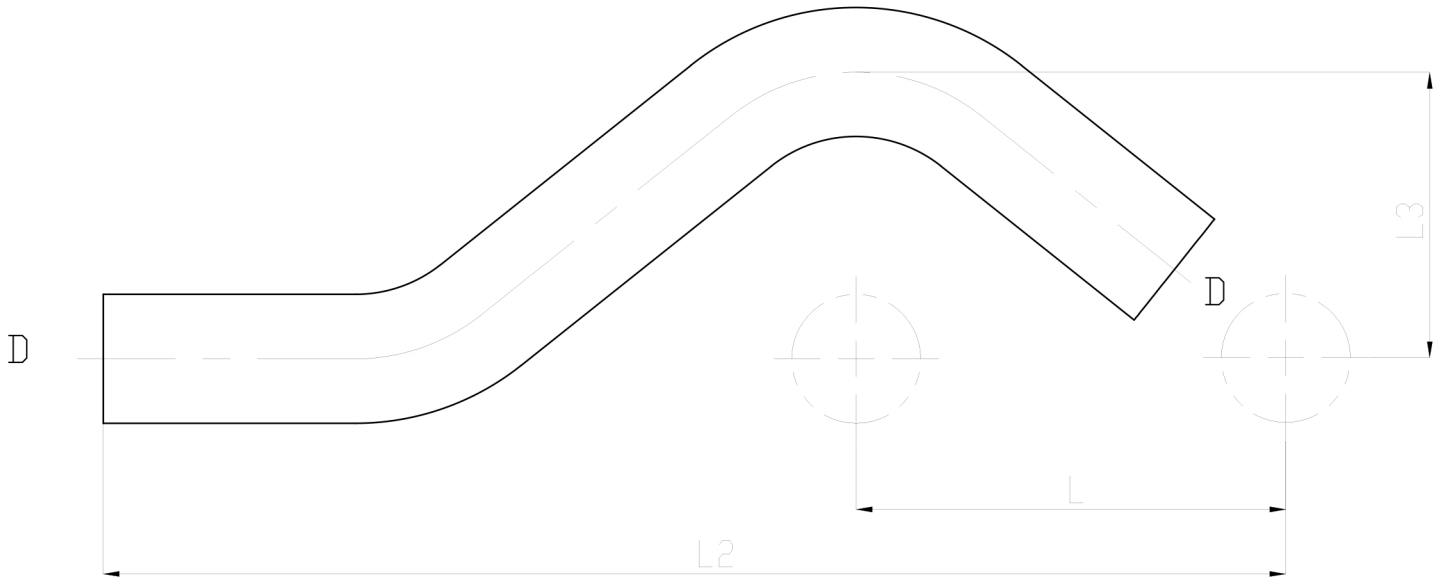


### BRIDGE



SIZE	PART No	D	L1	L	H	WEIGHT
						KG EACH
15	PFB15	15	57	158	37	0.105
18	PFB18	18	60	165	40	0.145
22	PFB22	22	65	178	44	0.196
28	PFB28	28	74	210	50	0.211

\*316L/1.4404 SS

\*-35°C to +135°C (EPDM Seal)

\*-20°C to +200°C (Optional FPM Seal)

\*Maximum 16 BAR Operating pressure

\*WRAS/DVGW Approved

\*Sizes 15MM to 108MM

\*Female threads Parallel Rp to EN10226-1/ISO7-1

\*Male threads Taper Rc to EN10226-1/ISO7-1

**\*\*DIMENSIONS SUBJECT TO CHANGE, PLEASE CONTACT US IF CRITICAL\*\***