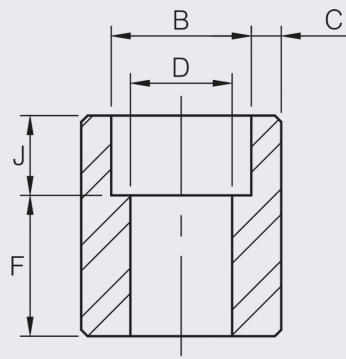


Half Coupling Socket Weld 3000LB (304/L)



NERO's range of Half Couplings are available in BSPT, BSPP, NPT and Socket Weld configurations

Pressure rating up to 200 BAR (3000 PSI)

Full Material traceability is available and 3.1B certification can be provided upon request

Socket Weld ends are to ASME B16.11-2016 / BS3799

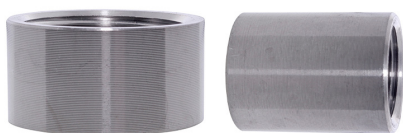
Larger sizes are available upon request

SIZE	PRODUCT CODE	B	C		D	F	J (MIN)	KG EACH
			AVG	MIN				
1/8	3HS02SW-304	10.8	3.18	3.18	6.9	16.0	9.5	0.04
1/4	3HS04SW-304	14.2	3.78	3.30	9.3	16.0	9.5	0.05
3/8	3HS04SW-304	17.6	4.01	3.50	12.6	17.5	9.5	0.07
1/2	3HS06SW-304	21.8	4.67	4.09	15.8	22.5	9.5	0.15
3/4	3HS08SW-304	27.2	4.90	4.27	21.0	24.0	12.5	0.21
1	3HS12SW-304	33.9	5.69	4.98	26.7	28.5	12.5	0.34
1-1/4	3HS20SW-304	42.7	6.07	5.28	35.1	30.0	12.5	0.48
1-1/2	3HS24SW-304	48.8	6.35	5.54	40.9	32.0	12.5	0.56
2	3HS32SW-304	61.2	6.93	6.04	52.5	41.0	16.0	1.09

**** Dimensions subject to change - Please contact us if critical ****

Other products you might like...

Couplings can also be supplied as part of our low pressure 150lb range



We also keep Half Couplings in BSPT, BSPP and NPT thread types in 3000lb 316/L

