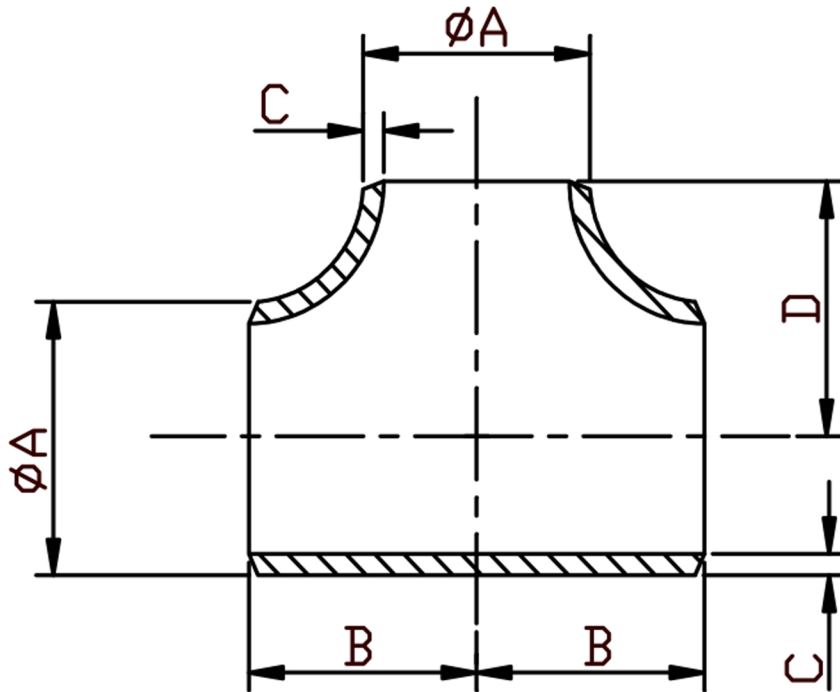


EQUAL TEE SCH10 304/L



SIZE N.B	PART NUMBER	A	B/D	C	Kg/100
1/2	BT08/1-304	21.3	25.4	2.11	9
3/4	BT12/1-304	26.6	28.7	2.11	12.9
1	BT16/1-304	33.4	38.1	2.77	22.3
1 1/4	BT20/1-304	42.1	47.75	2.77	35.6
1 1/2	BT24/1-304	48.1	57.15	2.77	47.7
2	BT32/1-304	60.3	63.50	2.77	68.1
2 1/2	BT40/1-304	73.0	76.20	3.05	120
3	BT48/1-304	88.9	85.85	3.05	157
4	BT64/1-304	114.3	104.9	3.05	246
5	BT80/1-304	141.3	124	3.40	404
6	BT96/1-304	168.3	143	3.40	550
8	BT128/1-304	219.08	178	3.76	2000
10	BT160/1-304	273.0	216	4.19	2815

*Conforming to ASTM A403, ANSI B16.9, ANSI B16.28
 *304/L Stainless steel Welded
 *Schedule 10S Wall thickness
 *Sizes 1/2" to 10" Nominal Bore

DIMENSIONS SUBJECT TO CHANGE, PLEASE CONTACT US IF CRITICAL