

SIZE	PRODUCT CODE			DIMENSIONS		
	BSP	NPT	SW	A	B	KG EACH
1/8	E02	E02N	E02SW	13.5	14	0.01
1/4	E04	E04N	E04SW	17	19	0.03
3/8	E06	E06N	E06SW	21.5	21	0.04
1/2	E08	E08N	E08SW	25.5	25.5	0.06
3/4	E12	E12N	E12SW	31.3	28	0.08
1	E16	E16N	E16SW	38.7	33	0.14
1-1/4	E20	E20N	E20SW	48	40	0.23
1-1/2	E24	E24N	E24SW	53.7	43	0.28
2	E32	E32N	E32SW	66.7	52	0.51
2-1/2	E40	E40N	E40SW	84	61	0.82
3	E48	E48N	E48SW	98	71	1.33
4	E64	E64N	E64SW	124	89	2.16

**** DIMENSIONS SUBJECT TO CHANGE - PLEASE CONTACT US IF CRITICAL ****

NERO's range of 90 deg Elbows are available threaded BSPP, NPT and with Socket weld end connections. They are made from high quality investment castings to ISO4144 or above.

BSP threads are to ISO 228-1 and 7-1

NPT threads are to ANSI B2.1

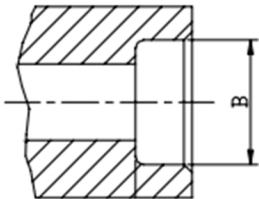
Made from 316 (CF8M) stainless steel

TABLE 1: PRESSURE-TEMPERATURE RATING	
TEMPERATURE (°C)	NO-SHOCK MAXIMUM WORKING PRESSURE (Bar)
-20 to 40	20
100	16.5
150	15
200	14
220	13.5

Note 1 Pressure for Intermediate temperatures may be determined by the interpolation method
Note 2 Temperatures indicated are those of the Internal fluid
Note 3 Piping loads, stresses And moments are not taken into account

SIZE	B
1/8	10.7MM
1/4	14MM
3/8	17.5MM
1/2	21.6MM
3/4	27MM
1	33.8MM
1-1/4	42.4MM
1-1/2	48.5MM
2	61.2MM
2-1/2	74.19MM
3	90.17MM
4	115.8MM

Socket weld bore



5 STAR ★★★★★
CUSTOMER SERVICE



SAME DAY DISPATCH -
ORDERS PLACED BEFORE 4:30PM



WEALTH OF
INDUSTRY KNOWLEDGE



ONE OF THE LARGEST
STOCKISTS IN THE UK