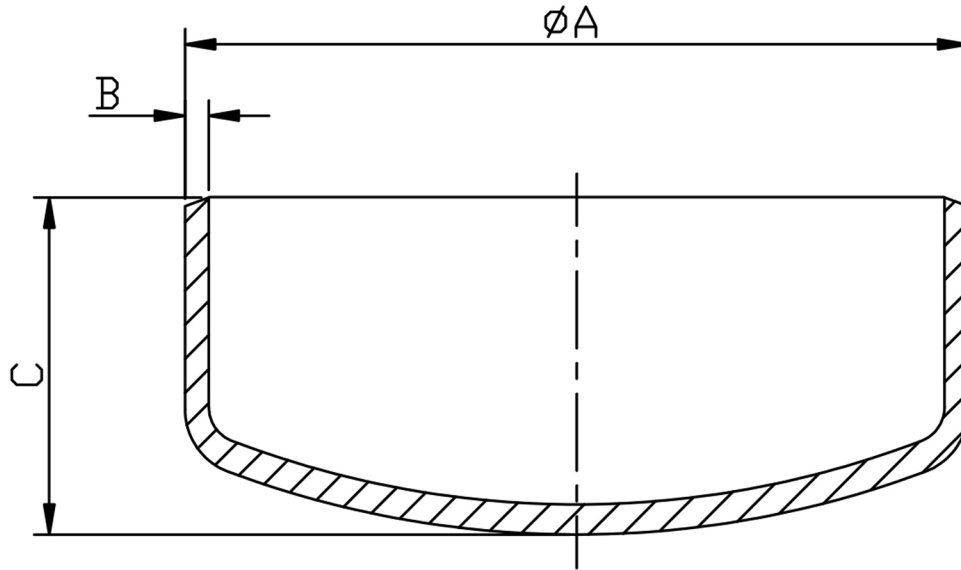


CAP SCH40 304/L



SIZE N.B	PART NUMBER	A	B	C	Kg/100
1/2	BC08/4-304	21.3	2.77	25.4	4.6
3/4	BC12/4-304	26.6	2.87	25.4	5.9
1	BC16/4-304	33.4	3.38	38.1	10.9
1 1/4	BC20/4-304	42.1	3.56	38.1	14.5
1 1/2	BC24/4-304	48.1	3.68	38.1	17.1
2	BC32/4-304	60.3	3.91	38.1	23.4
2 1/2	BC40/4-304	73.0	5.16	50.4	42.0
3	BC48/4-304	88.9	5.49	63.5	66.4
4	BC64/4-304	114.3	6.02	76.2	117.0
5	BC80/4-304	141.3	6.55	88.9	190.0
6	BC96/4-304	168.3	7.11	101.6	283.0

*Conforming to ASTM A403, ANSI B16.9, ANSI B16.28
 *304/L Stainless steel seamless
 *Schedule 40S Wall thickness
 *Sizes 1/2" to 6" Nominal Bore

DIMENSIONS SUBJECT TO CHANGE, PLEASE CONTACT US IF CRITICAL