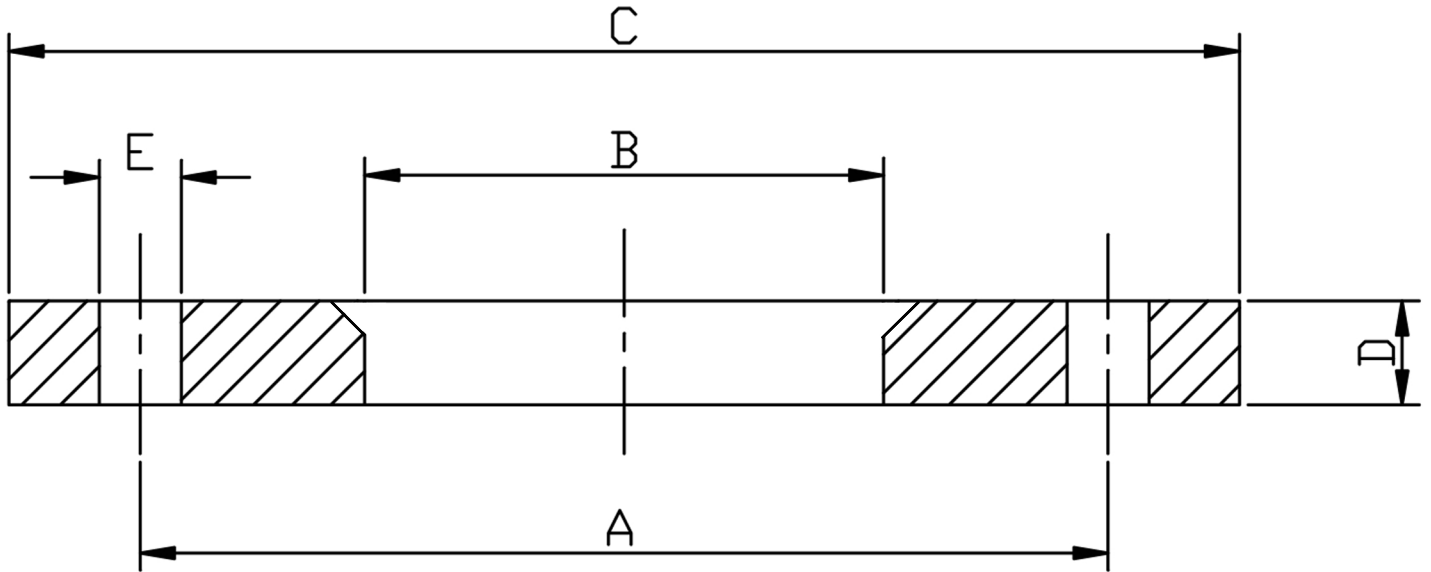


### PN16 BACKING FLANGE 304L



PIPE SIZE	DN	PART No 304/L	A	B	C	D	E	BOLT HOLES	Kg EACH
1	25	BF1631.0-304	85	34.5	115	10	14	4	1.11
1 1/4	32	BF1631.25-304	100	43.5	140	10	18	4	1.62
1 1/2	40	BF1631.5-304	110	49.5	150	10	18	4	1.86
2	50	BF1632.0-304	125	61.5	165	10	18	4	2.47
2 1/2	65	BF1632.5-304	145	74.4	185	10	18	4	3.00
3	80	BF1633.0-304	160	90.5	200	10	18	8	3.79
4	100	BF1634.0-304	180	116	220	10	18	8	4.03
5	125	BF1635.0-304	210	141.5	250	12.7	18	8	5.46
6	150	BF1636.0-304	240	170.5	285	12.7	22	8	6.57
8	200	BF1638.0-304	295	221.5	340	12.7	22	12	9.70

\*ASTM A182 304/L STAINLESS STEEL  
 \*DIMENSIONS IN MM  
 \*WEIGHTS IN Kg EACH

\*\*DIMENSIONS SUBJECT TO CHANGE, PLEASE CONTACT US IF CRITICAL\*\*