

SIZE BSPP (G)	SIZE NPT	PRODUCT CODE	PRESSURE (BAR)	A	B	C	D	E	H A/F	KG EACH
1/8	1/4	RN0204PN	350	26.1	8.1	13.1	3.5	7.5	15.9	0.032
1/4	1/8	RN0402PN	350	28.1	11.1	10.1	4.7	4.7	19.1	0.032
1/4	3/8	RN0406PN	350	32.1	11.1	14.1	4.7	10.3	19.1	0.040
1/4	1/2	RN0408PN	315	35.1	11.1	17.1	4.7	13.5	22.2	0.060
3/8	1/8	RN0602PN	350	30.1	12.1	10.1	8.1	4.7	22.2	0.030
3/8	1/4	RN0604PN	350	32.7	12.1	12.7	7.5	7.5	22.2	0.350
3/8	1/2	RN0608PN	315	35.7	12.1	15.9	8.1	13.5	22.2	0.045
3/8	3/4	RN0612PN	250	35.7	12.1	18.1	8.1	19.1	28.6	0.050
1/2	1/4	RN0804PN	315	36.7	14.1	12.7	11.1	7.5	28.6	0.078
1/2	3/8	RN0806PN	315	37.1	14.1	13.1	11.1	11.1	28.6	0.050
1/2	3/4	RN0812PN	250	42.1	14.1	18.1	11.1	19.1	28.6	0.060
1/2	1	RN0816PN	200	48.2	14.1	22.2	11.1	23.8	34.9	0.070
5/8	1/2	RN1008PN	200	44.1	16.1	16.1	13.5	13.5	30.1	0.060
3/4	1/2	RN1208PN	250	45.1	16.1	17.1	16.6	13.5	31.7	0.070
3/4	1	RN1216PN	200	50.1	16.1	22.1	16.6	23.8	34.9	0.070
3/4	1-1/4	RN1220PN	160	52.8	16.1	22.2	16.6	31.7	44.4	0.10
1	1/2	RN1608PN	200	47.1	19.1	16.1	22.2	13.5	41.3	0.12
1	3/4	RN1612PN	200	51.1	19.1	20.1	20.6	19.1	41.3	0.16
1	1-1/4	RN1620PN	160	53.5	19.1	22.2	20.6	31.7	44.4	0.25
1	1-1/2	RN1624PN	125	58.1	19.1	24.1	20.6	38.1	50.8	0.56
1-1/4	3/4	RN2012PN	160	53.1	20.1	19.1	28.6	19.1	50.8	0.20
1-1/4	1	RN2016PN	160	56.1	20.1	22.1	28.6	24.2	50.8	0.25
1-1/4	1-1/2	RN2024PN	125	58.1	20.1	24.1	28.6	38.1	50.8	0.56
1-1/4	2	RN2032PN	80	61.1	20.1	27.1	28.6	49.2	63.5	0.28
1-1/2	1	RN2416PN	125	59.1	22.1	23.1	33.3	23.8	56.4	0.28
1-1/2	1-1/4	RN2420PN	125	60.1	22.1	24.1	33.3	31.7	56.4	0.34
1-1/2	2	RN2432PN	80	65.1	22.1	27.1	33.3	49.2	63.5	0.36
2	1-1/4	RN3220PN	80	67.1	25.1	24.1	46.1	31.7	69.8	0.40
2	1-1/2	RN3224PN	80	67.1	25.1	24.1	46.1	38.1	69.8	0.40

**\*\* DIMENSIONS SUBJECT TO CHANGE - PLEASE CONTACT US IF CRITICAL \*\***

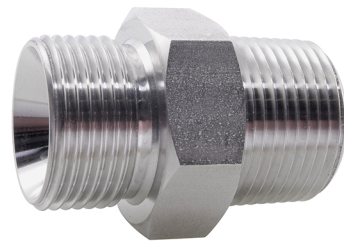
NERO's range of Hexagonal Nipples are available in BSPP x NPT threads, with a 60° internal cone on 1 end (recessed to accept a Bonded Washer) and NPT the other

Pressure rating up to 350 BAR (size dependant)

Can be supplied with 2.2 Certificate if Conformity - upon request

BSPP Male thread are to ISO 228/1  
 NPT Male thread are to ANSI/ASME B2.1  
 60° internal cone to BS 5200

We also keep Equal versions of this fitting + Bonded Washers in our Hydraulic range



We stock a wide range of Hydraulic Fittings to suit your requirements

