

FEATURES

- Fast Connection
- High Temperature up to 150°C
- Small, compact design
- Good resistance to chemical corrosive environments
- Food safety
- Allow full flow through Hose / Tubing

MATERIAL CONSTRUCTION

- Metal Body - SS 316
- Push Button - SS 316
- Claws - SS301
- Seals - FKM

SPECIFICATIONS

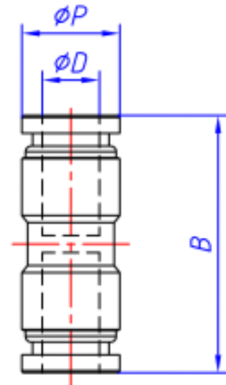
- Operating Pressure - 0-20 BAR
- Operating Temperature - -20 to 150°C
- Vacuum Rating - To 28" Hg
- Application - Air, Vacuum, Steam Beverage, Oil
- Types - Straight

FITTINGS ADVANTAGE

- Easy to push in and pull out tubes
- Raw material is SS316L and seal is FKM, for high temp and corrosive environments
- 100% tested, no leakage



SSPU



| CODE | ϕD (MM) | B | ϕP | WEIGHT (G) |
|---------|---------------|----|----------|------------|
| PI-4MU | 4 | 33 | 9 | 10 |
| PI-6MU | 6 | 36 | 11 | 18 |
| PI-8MU | 8 | 36 | 13.7 | 26.5 |
| PI-10MU | 10 | 39 | 15.5 | 31.5 |
| PI-12MU | 12 | 40 | 18.7 | 48 |

** DIMENSIONS SUBJECT TO CHANGE - PLEASE CONTACT US IF CRITICAL **

We also stock a range of Push-In fittings to work alongside these fittings



Applications:

- Pneumatics
- Air brake, fuel and lube applications
- Production lines (industrial and automotive)

