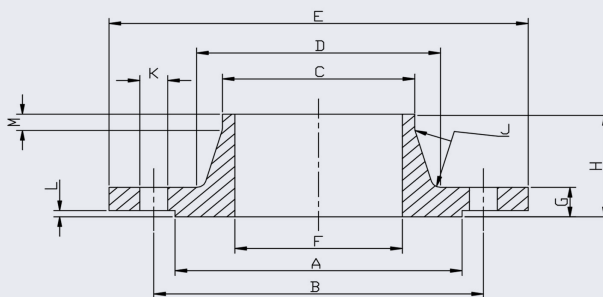
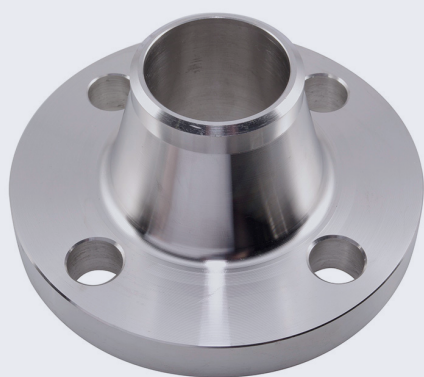


# 150LB Weld Neck Flange (316/L)



This flange conforms to ANSI/ASME B16.5 and is available in both 316/L and 304/L.

Full material traceability is available and 3.1B certification can be provided upon request.

Bolt kit sizes shown in the above table are for bolting two flanges together including the thickness of a gasket. If using a wafer pattern valve, longer bolts will be required.

PIPE SIZE	DN	SCHEDULE 10	SCHEDULE 40	A	B	C	D	E	F SCH10	F SCH40	G	H	J	K	L	M	BOLT	KG EACH	BOLT KIT CODE
1/2	15	F150WN0.5	F150WN0.5/S10	34.9	60.3	21.3	30.2	88.9	17.1	15.8	11.1	46.7	3	15.9	1.6	6.4	4XM12	0.50	BK02
3/4	20	F150WN0.75	F150WN0.75/S10	42.9	69.8	26.7	38.1	98.4	22.5	20.93	12.7	52.4	3	15.9	1.6	6.4	4XM12	0.70	BK03
1	25	F150WN1.0	F150WN1.0/S10	50.8	79.4	33.5	49.2	107.9	27.9	26.94	14.3	55.6	3	15.9	1.6	6.4	4XM12	1.10	BK03
1.25	32	F150WN1.25	F150WN1.25/S10	63.5	88.9	42.2	58.7	117.5	36.6	35.04	15.9	57.1	3	15.9	1.6	6.4	4XM12	1.50	BK03
1.5	40	F150WN1.5	F150WN1.5/S10	73	98.4	48.3	65.1	127	42.7	40.9	17.5	61.9	3	15.9	1.6	6.4	4XM12	1.80	BK03
2	50	F150WN2.0	F150WN2.0/S10	92.1	120.6	60.4	77.8	152.4	54.8	52.51	19	63.5	3	19	1.6	6.4	4XM16	2.70	BK04
2.5	65	F150WN2.5	F150WN2.5/S10	104.8	139.7	73.1	90.5	177.8	66.9	62.71	22.2	69.8	3	19	1.6	6.4	4XM16	4.40	BK06
3	80	F150WN3.0	F150WN3.0/S10	127	152.4	88.9	107.9	190.5	82.8	77.92	23.8	69.8	3	19	1.6	6.4	4XM16	5.20	BK06
4	100	F150WN4.0	F150WN4.0/S10	157.2	190.5	114.3	134.9	228.6	108.2	102.26	23.8	76.2	3	19	1.6	6.4	8XM16	7.50	BK07
5	125	F150WN5.0	F150WN5.0/S10	185.7	215.9	141.2	163.5	254	134.5	128.2	23.8	88.9	6.5	22.2	1.6	6.4	8XM20	9.20	BK10
6	150	F150WN6.0	F150WN6.0/S10	215.9	241.3	168.4	192.1	279.4	161.5	154.06	25.4	88.9	6.5	22.2	1.6	6.4	8XM20	11.00	BK10
8	200	F150WN8.0	F150WN8.0/S10	269.7	298.5	219.1	246.1	342.9	211.58	202.74	28.4	101.6	6.5	22.2	1.6	6.4	8XM20	18.30	BK12
14	350	F150WN14.0	-	412.8	476.3	355.6	400.1	533.4	346.04	N/A	35.1	127	8	28.4	1.6	6.4	12XM24	48.4	BK19
16	400	F150WN16.0	-	469.9	539.8	406.4	457.2	596.9	396.84	N/A	36.6	127	10	28.4	1.6	6.4	16XM27	60.6	BK22

**\*\* Dimensions subject to change - Please contact us if critical \*\***

## Other products you might like...

We also keep Slip-On, Blind and Threaded flanges to this standard



We also keep Gaskets to suit all our Flanges in both EPDM and Non-Asbestos materials

