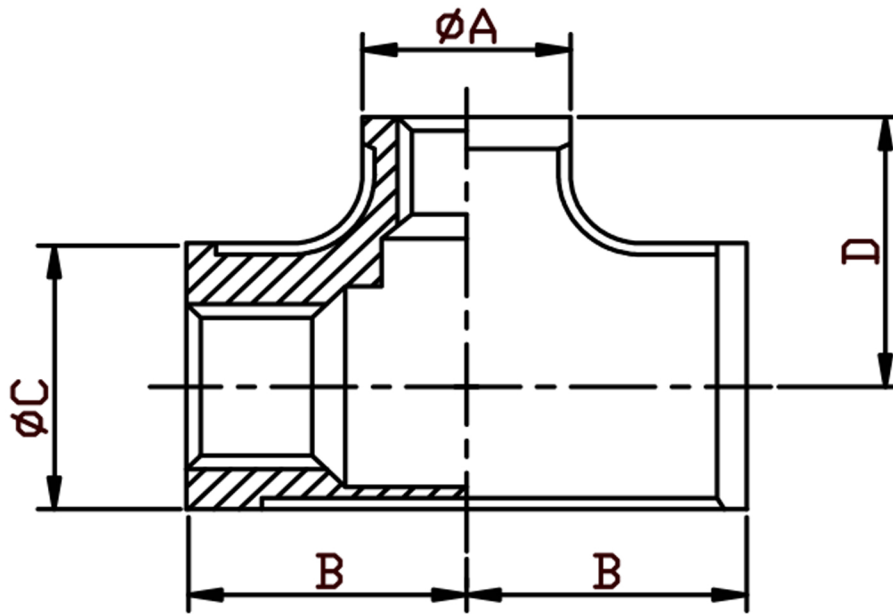


REDUCING TEE BSPP 316L



SIZE	PART No	A	B	C	D	Kg/100
1/4 X 1/8	RT0402	13.5	17.2	17	15.3	3.58
3/8 X 1/4	RT0604	17	19.1	21.4	20.2	5.90
1/2 X 1/4	RT0804	17.5	19	25.4	21.5	6.34
1/2 X 3/8	RT0806	21.4	20.5	25.4	21.9	6.93
3/4 X 3/8	RT1206	21.4	21.5	30.9	24.6	8.60
3/4 X 1/2	RT1208	25.4	24	30.9	27.7	10.03
1 X 1/2	RT1608	25.4	26	37.9	31.1	14.23
1 X 3/4	RT1612	30.9	29	37.9	32.1	15.96
1-1/4 X 3/4	RT2012	30.9	31	47.4	36.5	23.11
1-1/4 X 1	RT2016	30.9	34.5	47.4	39	26.32
1-1/2 X 1/2	RT2408	37.9	31.5	53.2	39.4	26.42
1-1/2 X 3/4	RT2412	30.9	31.5	53.2	39.4	26.17
1-1/2 X 1	RT2416	37.9	35	53.2	41.9	29.58
1-1/2 X 1-1/4	RT2420	47.4	39.5	53.2	44.4	34.60
2 X 1/2	RT3208	25.4	35.5	65.7	45.3	38.32
2 X 3/4	RT3212	30.9	35.5	65.7	45.3	39.72
2 X 1	RT3216	37.9	39	65.7	47.8	43.70
2 X 1-1/4	RT3220	47.4	43.5	65.7	50.3	49.37
2 X 1-1/2	RT3224	53.2	46.5	65.7	50.3	52.09

*Pressure rating up to 20 BAR (300 PSI)

*Female threads are BSPP (Parallel) to ISO 228-1

*316 CF8M stainless steel

*Investment castings

*Sizes 1/8" to 2"

DIMENSIONS SUBJECT TO CHANGE, PLEASE CONTACT US IF CRITICAL