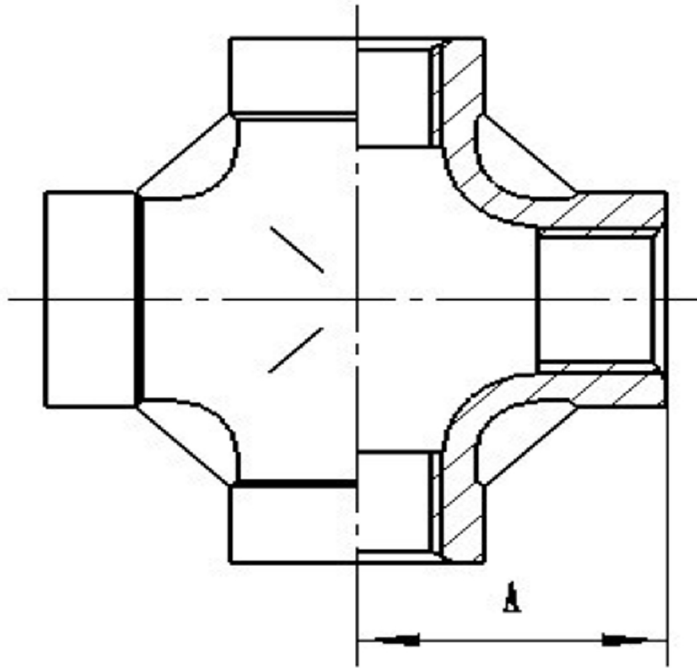


EQUAL CROSS SW 316L



SIZE	PART No	A	Kg/100
1/8	C02SW	17	5.70
1/4	C04SW	18.8	8.35
3/8	C06SW	22.8	12.50
1/2	C08SW	27	15.40
3/4	C12SW	31.6	21.00
1	C16SW	36.5	33.55
1-1/4	C20SW	42.7	46.55
1-1/2	C24SW	47.6	64.33
2	C32SW	56.1	93.15
2-1/2	C40SW	67	259.00
3	C48SW	77.5	383.00
4	C64SW	93.5	550.00

*Pressure rating up to 20 BAR (300 PSI)

*316 CF8M stainless steel

*Investment castings

*Sizes 1/8" to 4"

DIMENSIONS SUBJECT TO CHANGE, PLEASE CONTACT US IF CRITICAL