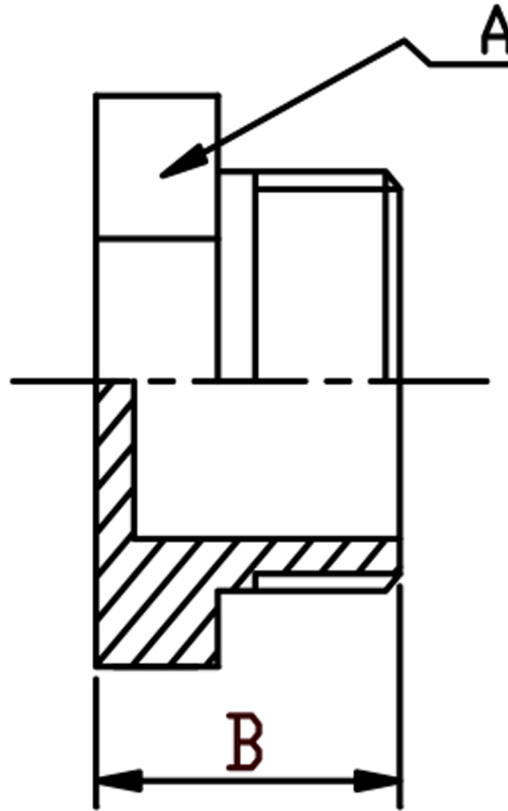


HEXAGON HEAD PLUG NPT 316L



SIZE	PART No	A	B	Kg/100
1/8	HP02N	16.8	17.7	1.40
1/4	HP04N	16.8	17.7	2.15
3/8	HP06N	18	18.5	2.05
1/2	HP08N	22	19.5	2.85
3/4	HP12N	28	22	4.85
1	HP16N	35	24.8	8.40
1-1/4	HP20N	44	28.8	13.88
1-1/2	HP24N	50	28.8	16.40
2	HP32N	62	33.5	27.20
2-1/2	HP40N	78	34	37.36
3	HP48N	91	37.5	53.46
4	HP64N	116	44	94.40

*Pressure rating up to 20 BAR (300 PSI)

*Threads are NPT to ANSI B2.1

*316 CF8M stainless steel

*Investment castings

*Sizes 1/8" to 4"

DIMENSIONS SUBJECT TO CHANGE, PLEASE CONTACT US IF CRITICAL