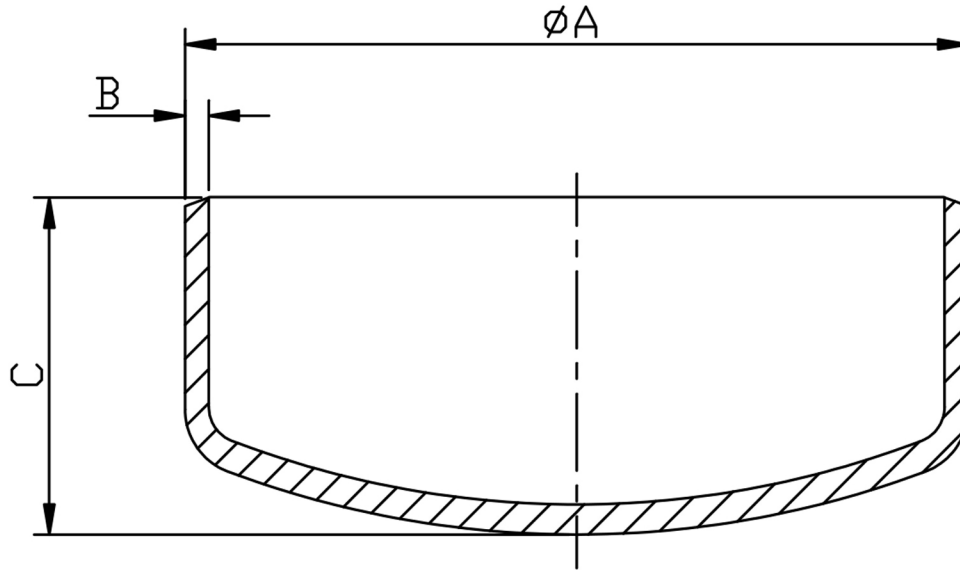


CAP SCH10 316/L



SIZE N.B	PART NUMBER	A	B	C	Kg/100
1/2	BC08/1	21.3	2.11	25.4	4.0
3/4	BC12/1	26.6	2.11	25.4	5.2
1	BC16/1	33.4	2.77	38.1	9.0
1 1/4	BC20/1	42.1	2.77	38.1	11.3
1 1/2	BC24/1	48.1	2.77	38.1	13.0
2	BC32/1	60.3	2.77	38.1	16.8
2 1/2	BC40/1	73.0	3.05	50.4	24.2
3	BC48/1	88.9	3.05	63.5	36.2
4	BC64/1	114.3	3.05	76.2	58.5
5	BC80/1	141.3	3.40	88.9	97.8
6	BC96/1	168.3	3.40	101.6	135.0
8	BC128/1	219.08	3.76	127.0	275.0
10	BC160/1	273.0	4.19	152.4	445.0

*Conforming to ASTM A403, ANSI B16.9, ANSI B16.28
 *316/L Stainless steel seamless
 *Schedule 10S Wall thickness
 *Sizes 1/2" to 10" Nominal Bore

****DIMENSIONS SUBJECT TO CHANGE, PLEASE CONTACT US IF CRITICAL****