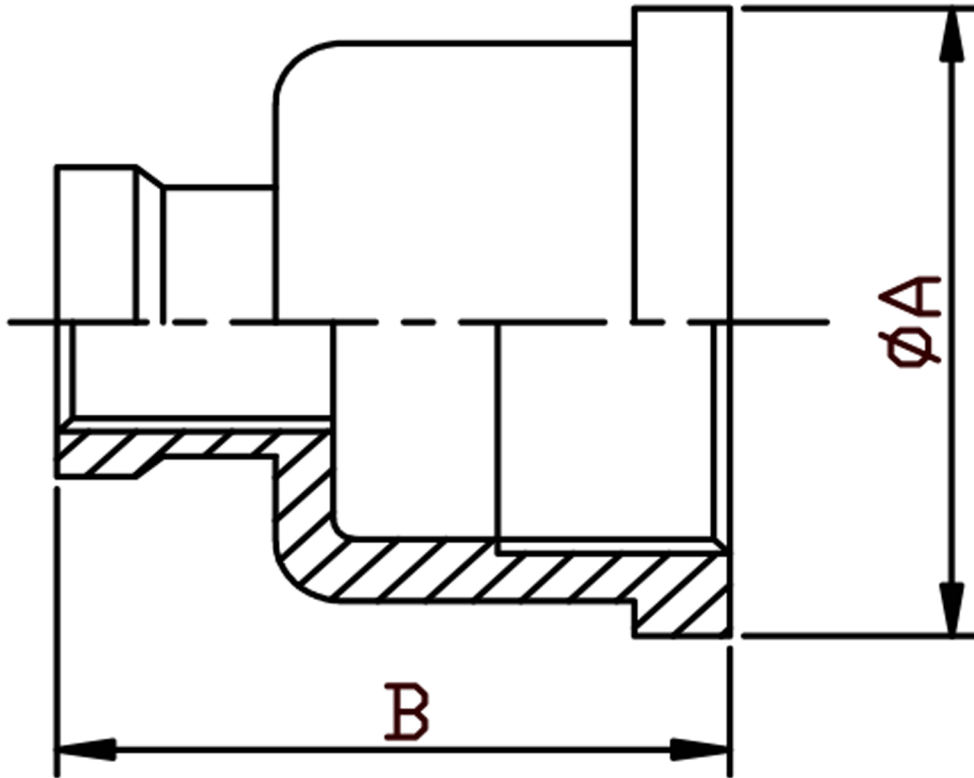


### REDUCING SOCKET NPT 316L



SIZE	PART No	A	B	Kg/100
1/4 X 1/8	RS0402N	18.5	24.9	2.70
3/8 X 1/4	RS0604N	22	29	3.95
1/2 X 1/4	RS0804N	26.5	29.4	5.20
1/2 X 3/8	RS0806N	26.5	31.6	5.90
3/4 X 3/8	RS1206N	32.5	32.6	7.80
3/4 X 1/2	RS1208N	32.5	32.5	9.25
1 X 1/2	RS1608N	40	40	12.80
1 X 3/4	RS1612N	40	38	15.15
1-1/4 X 3/4	RS2012N	49	41	18.90
1-1/4 X 1	RS2016N	49	45	21.10
1-1/2 X 1	RS2416N	55	46	24.40
1-1/2 X 1-1/4	RS2420N	55	49	24.40
2 X 1	RS3216N	68	50	37.30
2 X 1-1/4	RS3220N	68	53	39.70
2 X 1-1/2	RS3224N	68	54	40.70
2-1/2 X 2	RS4032N	84	61	60.00
3 X 2	RS4832N	97.5	64	82.00
3 X 2-1/2	RS4840N	97.5	67	92.16
4 X 2	RS6432N	124	70	132.28
4 X 3	RS6448N	124	76	146.33

\*Pressure rating up to 20 BAR (300 PSI)

\*Threads are NPT to ANSI B2.1

\*316 CF8M stainless steel

\*Investment castings

\*Sizes 1/8" to 4"

\*\*DIMENSIONS SUBJECT TO CHANGE, PLEASE CONTACT US IF CRITICAL\*\*