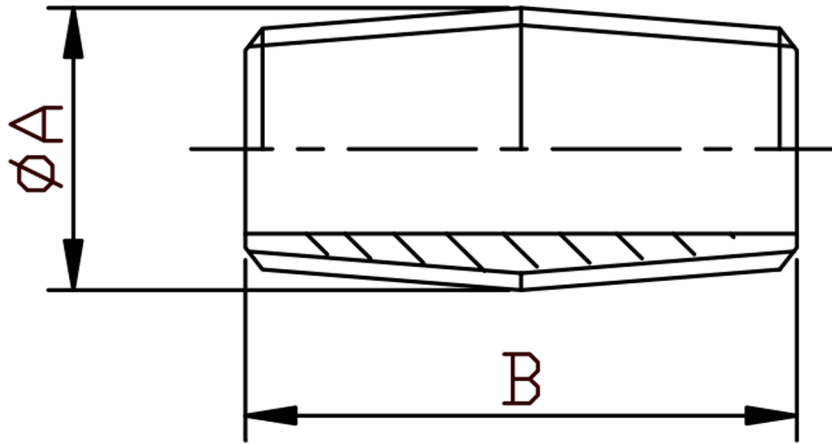


CLOSE TAPER NIPPLE BSPT 316L



SIZE	PART No	A	B	Kg/100
1/4	CTN04	13.5	24	1.68
3/8	CTN06	17.2	25	2.31
1/2	CTN08	21.3	29	3.75
3/4	CTN12	26.9	32	5.31
1	CTN16	33.7	38	9.40
1-1/4	CTN20	42.4	38	12.35
1-1/2	CTN24	48.3	44	16.17
2	CTN32	60.3	44	23.11
2-1/2	CTN40	76.1	57	37.94
3	CTN48	88.9	64	53.89
4	CTN64	114.3	76	92.88

*Pressure rating up to 50 BAR (750 PSI)

*Male threads are BSPT (Taper) to ISO 7-1

*316L Stainless Steel

*Manufactured from pipe

*Sizes 1/4" to 4"

DIMENSIONS SUBJECT TO CHANGE, PLEASE CONTACT US IF CRITICAL