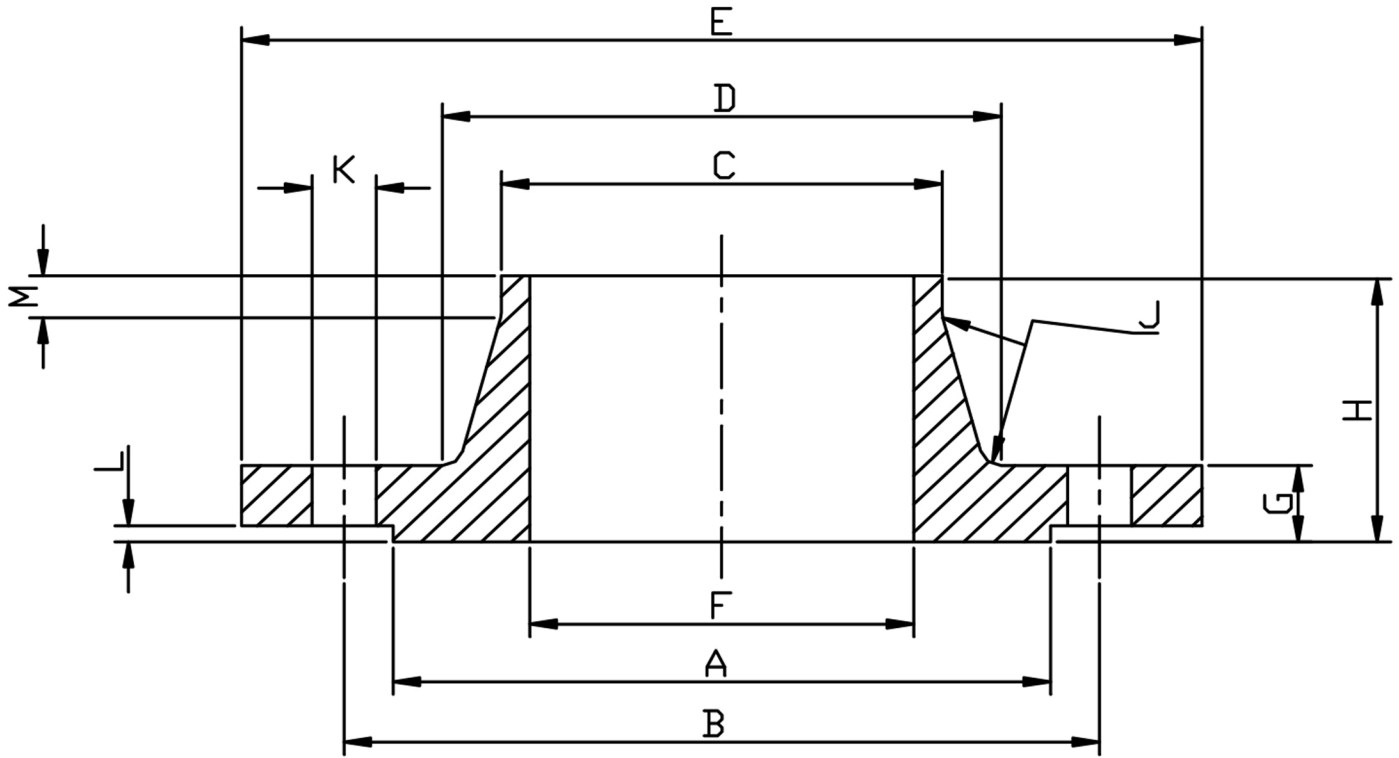


### PN16/2 WELD NECK TYPE 11B, 316/L



PIPE SIZE	DN	PART No 316/L	A	B	C	D	E	F	G	H	J	K	L	M	BOLT SIZES	Kg EACH
1/2	15	F1620.5	45	65	21.3	32	95	17.3	14	35	3	14	3	6	4XM12	0.65
3/4	20	F1620.75	58	75	26.9	39	105	22.3	16	38	4	14	3	6	4XM12	0.95
1	25	F1621.0	68	85	33.7	46	115	28.5	16	38	4	14	3	6	4XM12	1.14
1 1/4	32	F1621.25	78	100	42.4	56	150	36.6	16	40	5	18	3	6	4XM16	1.69
1 1/2	40	F1621.5	88	110	48.3	64	150	43.1	16	42	5	18	3	7	4XM16	1.86
2	50	F1622.0	102	125	60.3	74	165	54.5	18	45	5	18	3	8	4XM16	2.53
2 1/2	65	F1622.5	122	145	76.1	92	185	70.3	18	45	6	18	3	10	4XM16	3.06
3	80	F1623.0	138	160	88.9	110	200	82.5	20	50	6	18	3	10	8XM16	3.70
4	100	F1624.0	158	180	114.3	130	220	107.1	20	52	6	18	3	12	8XM16	4.62
5	125	F1625.0	188	210	139.7	158	250	131.7	22	55	6	18	3	12	8XM16	6.30
6	150	F1626.0	212	240	168.3	184	285	159.3	22	55	8	22	3	12	8XM20	7.75

\*ASTM A182 316/L STAINLESS STEEL  
 \*TO EN1092-1 (WAS BS4504)  
 \*DIMENSIONS IN MM  
 \*WEIGHTS IN Kg EACH

\*\*DIMENSIONS SUBJECT TO CHANGE, PLEASE CONTACT US IF CRITICAL\*\*