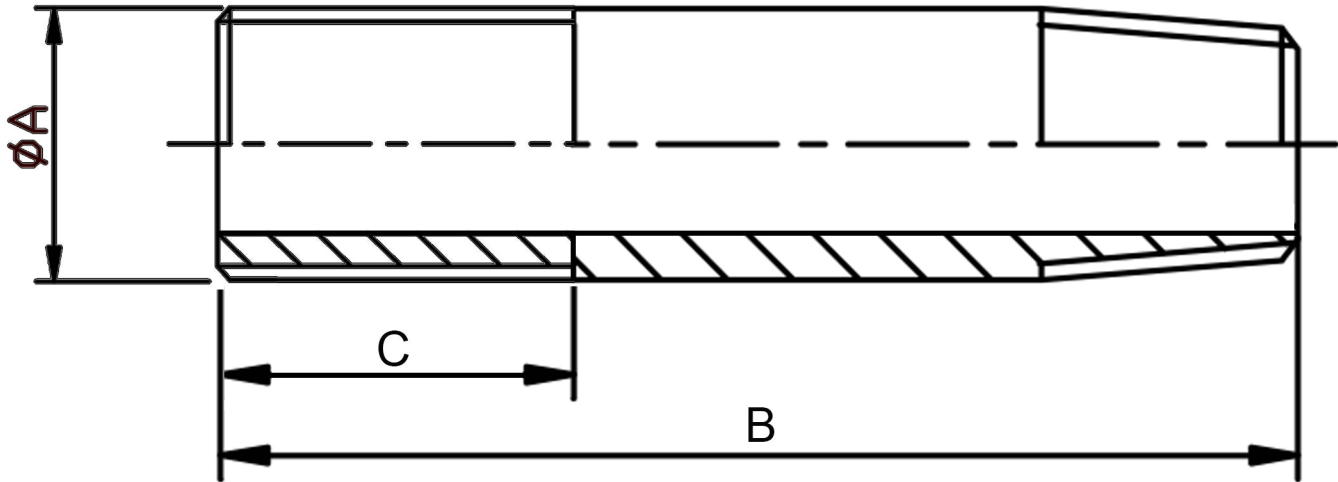


LONG SCREW BSPT/BSP 316L



SIZE	PART No	A	B	C	Kg/100
1/2	LS08	21.34	100	52	8.8
3/4	LS12	26.67	100	54	11.9
1	LS16	33.40	150	62	28.2
1-1/4	LS20	42.16	150	70	36.7
1-1/2	LS24	48.26	150	71	43.2
2	LS32	60.33	150	82	53.7

*Pressure rating up to 50 BAR (750 PSI)

*Male threads are BSPT (Taper) to ISO 7-1, BSPP to ISO 228-1

*316L stainless steel

*Manufactured from pipe

*Sizes 1/2" to 2"

DIMENSIONS SUBJECT TO CHANGE, PLEASE CONTACT US IF CRITICAL