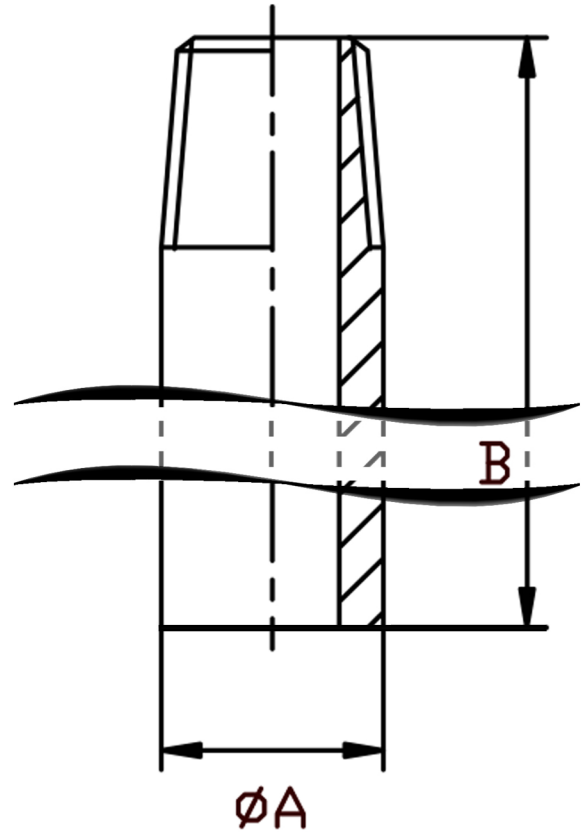


EXTENDED/REDUCED LENGTH WELD NIPPLE BSPT 316L

THREAD SIZE BSPT	PART No	LENGTH B	A	KG/100
1/8	WN02-20	20	10.2	0.6
1/8	WN02-40	40	10.2	1.3
1/8	WN02-50	50	10.2	1.8
1/4	WN04-40	40	13.5	1.9
1/4	WN04-50	50	13.5	2.6
1/4	WN04-60	60	13.5	3.1
1/4	WN04-80	80	13.5	5.0
1/4	WN04-100	100	13.5	5.6
1/4	WN04-130	130	13.5	7.6
1/4	WN04-150	150	13.5	8.8
1/4	WN04-180	180	13.5	10.0
1/4	WN04-200	200	13.5	11.7
1/4	WN04-250	250	13.5	14.7
1/4	WN04-300	300	13.5	18.1
3/8	WN06-40	40	17.2	2.8
3/8	WN06-50	50	17.2	3.1
3/8	WN06-60	60	17.2	3.8
3/8	WN06-80	80	17.2	5.3
3/8	WN06-100	100	17.2	6.9
3/8	WN06-130	130	17.2	8.7
3/8	WN06-150	150	17.2	10.2
3/8	WN06-180	180	17.2	13.7
3/8	WN06-200	200	17.2	15.4
3/8	WN06-250	250	17.2	19.2
3/8	WN06-300	300	17.2	23.5
1/2	WN08-50	50	21.3	5.0
1/2	WN08-60	60	21.3	7.2
1/2	WN08-80	80	21.3	8.8
1/2	WN08-100	100	21.3	9.8
1/2	WN08-130	130	21.3	12.5
1/2	WN08-150	150	21.3	15.3
1/2	WN08-180	180	21.3	18.9
1/2	WN08-200	200	21.3	20.9
1/2	WN08-250	250	21.3	26.6
1/2	WN08-300	300	21.3	32.2
3/4	WN12-50	50	26.9	3.7
3/4	WN12-60	60	26.9	5.4
3/4	WN12-80	80	26.9	11.3
3/4	WN12-100	100	26.9	12.3
3/4	WN12-130	130	26.9	16.4
3/4	WN12-150	150	26.9	19.2
3/4	WN12-180	180	26.9	23.8
3/4	WN12-200	200	26.9	26.3
3/4	WN12-250	250	26.9	33.7
3/4	WN12-300	300	26.9	40.8
1	WN16-50	50	33.7	7.7
1	WN16-60	60	33.7	9.9
1	WN16-80	80	33.7	14.1
1	WN16-100	100	33.7	18.3
1	WN16-130	130	33.7	24.8
1	WN16-150	150	33.7	29.3
1	WN16-180	180	33.7	36.1
1	WN16-200	200	33.7	39.7
1	WN16-250	250	33.7	51.5
1	WN16-300	300	33.7	61.0
1-1/4	WN20-60	60	42.4	9.3



1-1/4	WN20-80	80	42.4	10.4
1-1/4	WN20-100	100	42.4	24.6
1-1/4	WN20-130	130	42.4	33.4
1-1/4	WN20-150	150	42.4	36.9
1-1/4	WN20-180	180	42.4	44.8
1-1/4	WN20-200	200	42.4	51.3
1-1/4	WN20-250	250	42.4	63.5
1-1/4	WN20-300	300	42.4	77.9
1-1/2	WN24-60	60	48.3	9.4
1-1/2	WN24-80	80	48.3	10.7
1-1/2	WN24-100	100	48.3	28.4
1-1/2	WN24-130	130	48.3	38.8
1-1/2	WN24-150	150	48.3	44.4
1-1/2	WN24-180	180	48.3	52.4
1-1/2	WN20-200	200	48.3	59.0
1-1/2	WN20-250	250	48.3	75.2
1-1/2	WN20-300	300	48.3	92.5
2	WN32-60	60	60.3	13.0
2	WN32-80	80	60.3	27.1
2	WN32-130	130	60.3	50.8
2	WN32-150	150	60.3	59.5
2	WN32-180	180	60.3	73.9
2	WN32-200	200	60.3	87.4
2	WN32-250	250	60.3	106.1
2	WN32-300	300	60.3	128.0

*Pressure rating up to 50 BAR (750 PSI)
 *Male threads are BSPT (Taper) to ISO 7-1
 *316L stainless steel
 *Manufactured from pipe
 *Sizes 1/8" to 2"

DIMENSIONS SUBJECT TO CHANGE, PLEASE CONTACT US IF CRITICAL