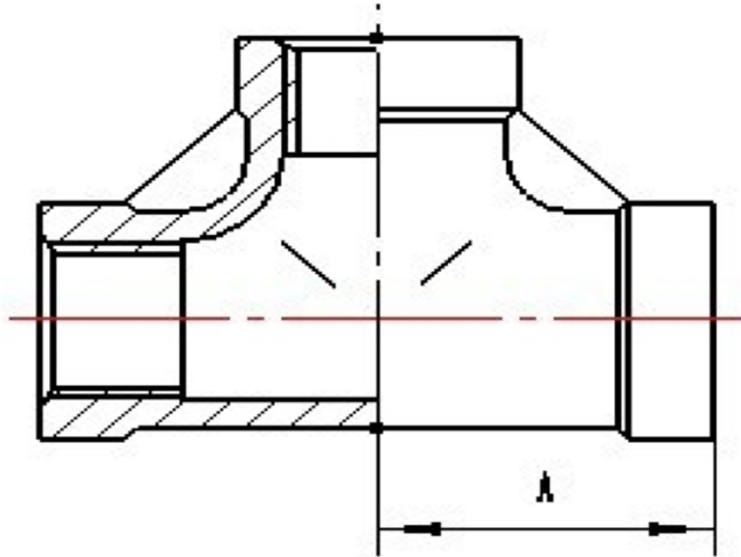


EQUAL TEE SW 316L



SIZE	PART No	A	Kg/100
1/8	T02SW	17	2.08
1/4	T04SW	19	6.95
3/8	T06SW	22	5.30
1/2	T08SW	25	8.30
3/4	T12SW	28.5	11.20
1	T16SW	34	19.30
1-1/4	T20SW	40.5	32.02
1-1/2	T24SW	45	36.49
2	T32SW	54	62.53
2-1/2	T40SW	68	108.95
3	T48SW	77.6	171.90
4	T64SW	93.5	304.20

*Pressure rating up to 20 BAR (300 PSI)

*316 CF8M stainless steel

*Investment castings

*Sizes 1/8" to 4"

DIMENSIONS SUBJECT TO CHANGE, PLEASE CONTACT US IF CRITICAL