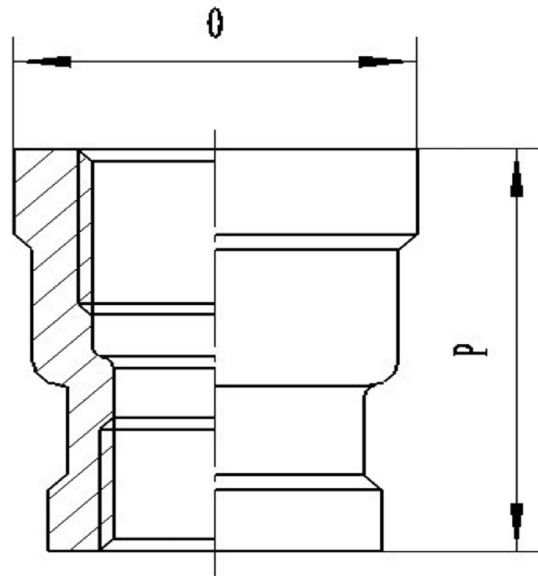


### REDUCING SOCKET SW 316L



SIZE	PART No	O	P	Kg/100
1/4 X 1/8	RS0402SW	18.5	24.9	2.70
3/8 X 1/8	RS0602SW	22	27.1	3.60
3/8 X 1/4	RS0604SW	22	29	3.95
1/2 X 1/8	RS0802SW	26.5	27.5	4.65
1/2 X 1/4	RS0804SW	26.5	29.4	5.20
1/2 X 3/8	RS0806SW	26.5	31.6	5.90
3/4 X 3/8	RS1206SW	32.5	32.6	7.80
3/4 X 1/2	RS1208SW	32.5	33	9.25
1 X 1/2	RS1608SW	40	37	12.80
1 X 3/4	RS1612SW	40	38	15.15
1-1/4 X 3/4	RS2012SW	49	41	18.90
1-1/4 X 1	RS2016SW	49	45	21.10
1-1/2 X 1/2	RS2408SW	55	41	21.70
1-1/2 X 3/4	RS2412SW	55	42	22.31
1-1/2 X 1	RS2416SW	55	46	24.40
1-1/2 X 1-1/4	RS2420SW	55	49	24.40
2 X 1/2	RS3208SW	68	45	32.85
2 X 3/4	RS3212SW	68	46	34.30
2 X 1	RS3216SW	68	50	37.30
2 X 1-1/4	RS3220SW	68	53	39.70
2 X 1-1/2	RS3224SW	68	54	40.70
2-1/2 X 1-1/2	RS4024SW	84	57	58.00
2-1/2 X 2	RS4032SW	84	61	60.00
3 X 1-1/2	RS4824SW	97.5	60	78.90
3 X 2	RS4832SW	97.5	64	82.00
3 X 2-1/2	RS4840SW	97.5	67	92.16
4 X 2	RS6432SW	124	70	132.28
4 X 2-1/2	RS6440SW	124	73	184.00
4 X 3	RS6448SW	124	76	146.33

\*Pressure rating up to 20 BAR (300 PSI)

\*316 CF8M stainless steel

\*Investment castings

\*Sizes 1/8" to 4"

\*\*DIMENSIONS SUBJECT TO CHANGE, PLEASE CONTACT US IF CRITICAL\*\*