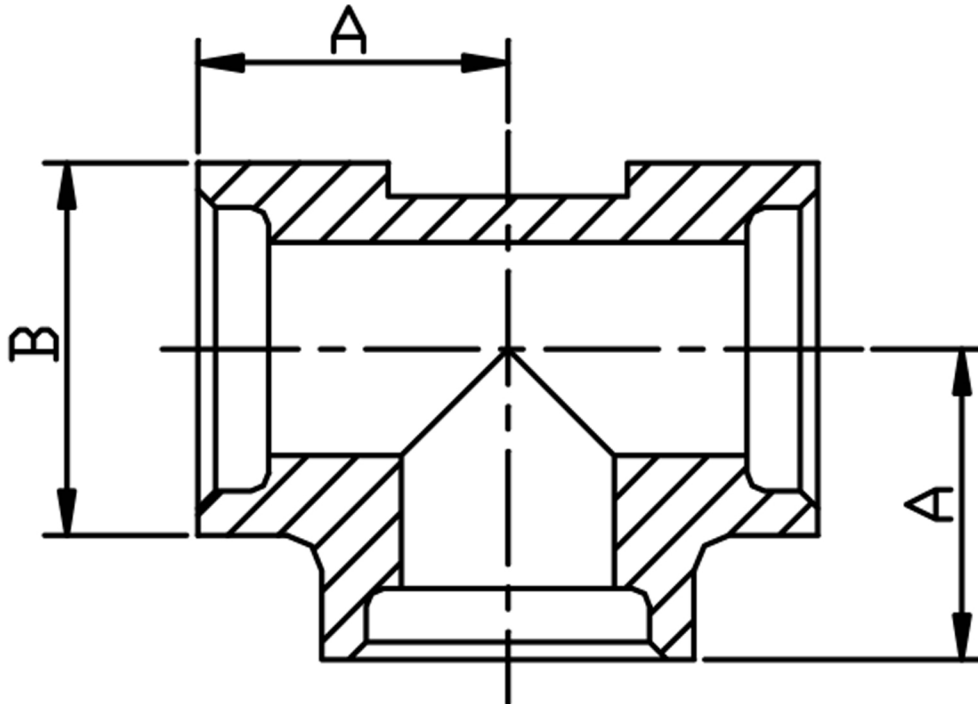


EQUAL TEE SOCKET WELD 316L



SIZE SW	PART No	A	B	Kg/100
1/2	6T08SW	29.5	33.8	5.55
3/4	6T12SW	35.5	41.2	9.31
1	6T16SW	40	49.85	15.72

*Socket weld ends (SW)

*Dimensions to ANSI B16.11/BS3799

*6000 LB rating

*Sizes 1/2" to 1"

*316L stainless steel

*Larger sizes are available

****DIMENSIONS SUBJECT TO CHANGE, PLEASE CONTACT US IF CRITICAL****