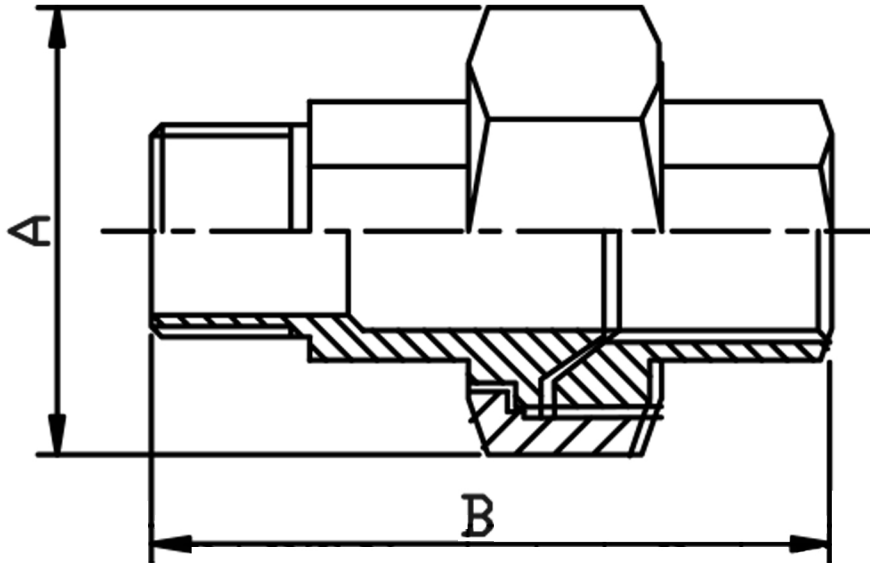


### UNION CONICAL MALE FEMALE BSP 316L



SIZE	PART No	A	B	Kg/100
1/8	UCMF02	29.1	35.5	8.90
1/4	UCMF04	29.1	46	10.85
3/8	UCMF06	34	47.5	15.20
1/2	UCMF08	37.5	53.6	16.35
3/4	UCMF12	44.5	58.3	23.05
1	UCMF16	53.5	69	40.15
1-1/4	UCMF20	64	71.1	54.40
1-1/2	UCMF24	71.5	80	72.35
2	UCMF32	85.5	88.2	105.45

\*Pressure rating up to 20 BAR (300 PSI)

\*Female threads are BSPP (Parallel) to ISO 228-1

\*Male threads are BSPT (Taper) to ISO 7-1

\*316 CF8M stainless steel

\*Investment castings

\*Sizes 1/8" to 2"

\*\*DIMENSIONS SUBJECT TO CHANGE, PLEASE CONTACT US IF CRITICAL\*\*