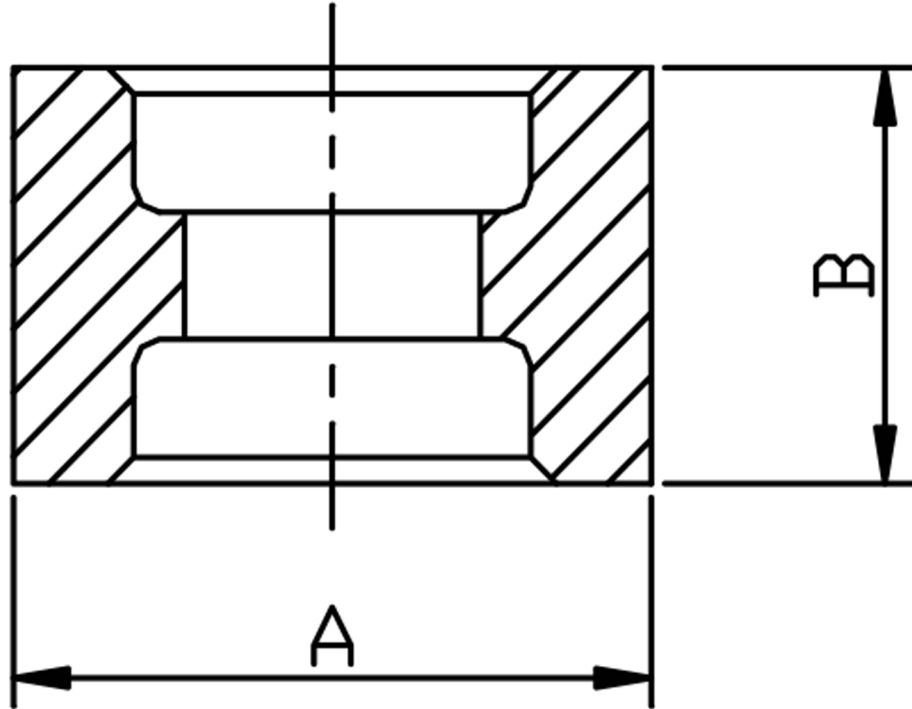


### FULL COUPLING SOCKET WELD 316L



SIZE SW	PART No	A	B	Kg/100
1/4	6S04SW	23.55	26.5	0.75
3/8	6S06SW	27.9	26	1.07
1/2	6S08SW	33.8	29.5	1.81
3/4	6S12SW	41.2	35.5	2.59
1	6S16SW	49.85	39	4.22

\*Socket weld ends (SW)

\*Dimensions to ANSI B16.11/BS3799

\*6000 LB rating

\*Sizes 1/4" to 1"

\*316L stainless steel

\*Larger sizes are available

**\*\*DIMENSIONS SUBJECT TO CHANGE, PLEASE CONTACT US IF CRITICAL\*\***