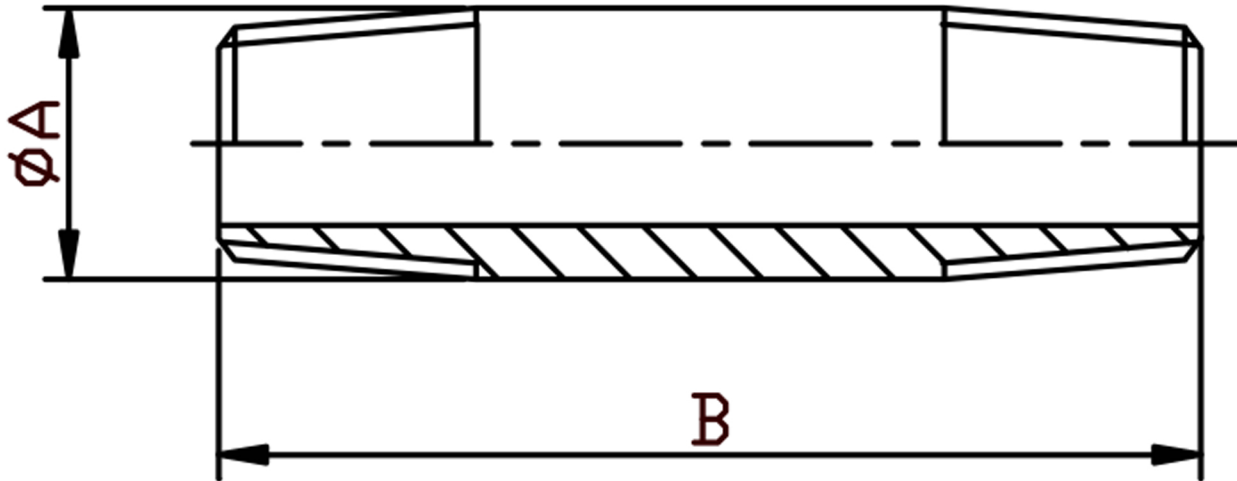


BARREL NIPPLE BSPT 316L



SIZE	PART No	A	B	Kg/100
1/8	BN02	10.3	30	1.29
1/4	BN04	13.7	30	2.65
3/8	BN06	17.2	40	3.5
1/2	BN08	21.3	60	7.28
3/4	BN12	26.7	60	9.44
1	BN16	33.4	60	14.34
1-1/4	BN20	42.2	80	24.42
1-1/2	BN24	48.3	80	28.06
2	BN32	60.3	100	49.52
2-1/2	BN40	76.1	100	63.85
3	BN48	88.9	120	97.01
4	BN64	114.3	120	142.73
5	BN80	141.3	120	160.05
6	BN96	168.3	150	325.11

- *Pressure rating up to 50 BAR (750 PSI)
- *Male threads are BSPT (Taper) to ISO 7-1
- *316L stainless steel
- *Manufactured from pipe
- *Sizes 1/8" to 6"

****DIMENSIONS SUBJECT TO CHANGE, PLEASE CONTACT US IF CRITICAL****