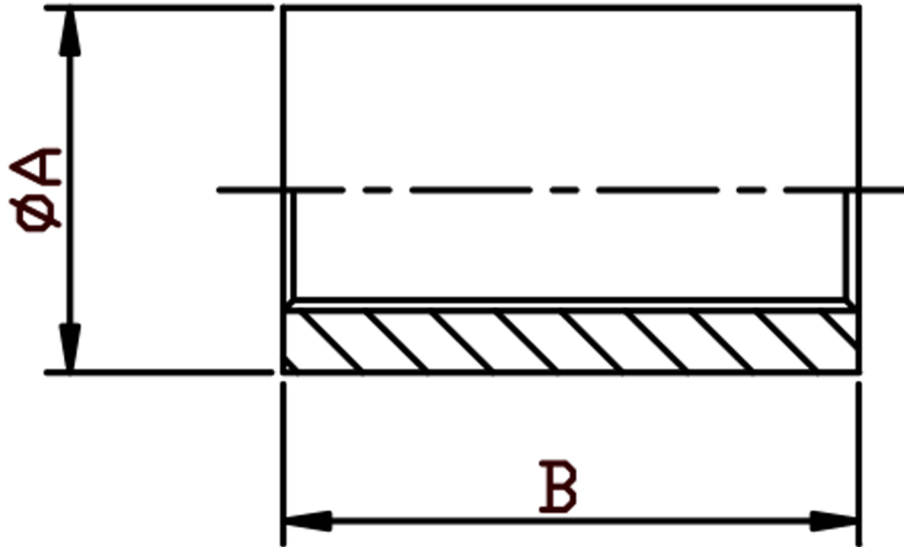


### FULL SOCKET NPT 316L



SIZE	PART No	A	B	Kg/100
1/8	S02N	15	20	2.33
1/4	S04N	18.5	25	3.9
3/8	S06N	21.3	26	4.39
1/2	S08N	26.6	34	8.71
3/4	S12N	31.8	36	10.8
1	S16N	39.5	43	19.51
1-1/4	S20N	48.3	48	29.03
1-1/2	S24N	54.5	48	34.36
2	S32N	66.2	56	49.37
2-1/4	S36N	76.2	38	39.4
2-1/2	S40N	82	65	74.26
3	S48N	95	71	97.46
4	S64N	121	83	124.2

\*Pressure rating up to 10 BAR (150 PSI)

\*Threads are NPT to ANSI B2.1

\*316L stainless steel

\*Manufactured from castings

\*Sizes 1/8" to 4"

\*\*DIMENSIONS SUBJECT TO CHANGE, PLEASE CONTACT US IF CRITICAL\*\*