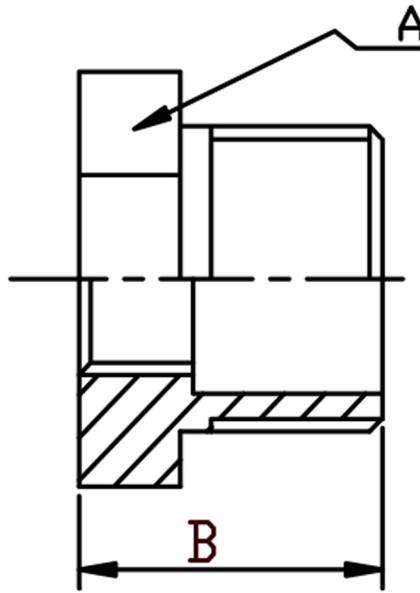


REDUCING BUSH 316L BSPT MALE/BSPP FEMALE



SIZE	PART No	A	B	Kg/100
1/4 x 1/8	RB0402	14.5	14.5	1.21
3/8 X 1/8	RB0602	18	16	1.93
3/8 X 1/4	RB0604	18	16	1.86
1/2 X 1/8	RB0802	21.4	19.5	3.31
1/2 X 1/4	RB0804	21.4	19.5	3.25
1/2 X 3/8	RB0806	21.4	19.5	2.94
3/4 X 1/4	RB1204	27	21	5.74
3/4 X 3/8	RB1206	27	21	5.25
3/4 X 1/2	RB1208	27	21	5.13
1X 1/4	RB1604	33.9	24	9.91
1 X 3/8	RB1606	33.9	24	9.55
1 X 1/2	RB1608	33.9	24	9.44
1X 3/4	RB1612	33.9	24	8.52
1-1/4 X 3/8	RB2006	42.7	27	13.44
1-1/4 X 1/2	RB2008	42.7	27	16.6
1-1/4 X 3/4	RB2012	42.7	27	15.43
1-1/4 X 1	RB2016	42.7	27	12.09
1-1/2 X 3/8	RB2406	48.6	27	17.84
1-1/2 X 1/2	RB2408	48.6	27	16.62
1-1/2 X 3/4	RB2412	48.6	27	20.55
1-1/2 X 1	RB2416	48.6	27	18.84
1-1/2 X 1-1/4	RB2420	48.6	27	13.84
2 X 1/2	RB3208	60.5	31	28.28
2 X 3/4	RB3212	60.5	31	26.84
2 X 1	RB3216	60.5	31	30.3
2 X 1-1/4	RB3220	60.5	31	31.46
2 X 1-1/2	RB3224	60.5	31	30.68
2-1/2 X 3/4	RB4012	78	34	32.40
2-1/2 X 1	RB4016	78	34	38.94
2-1/2 X 1-1/4	RB4020	78	34	35.57
2-1/2 X 1-1/2	RB4024	78	34	56.63
2-1/2 X 2	RB4032	78	34	46.3
3 X 1	RB4816	91	38	64.83
3 X 1-1/4	RB4820	91	38	68.65
3 X 1-1/2	RB4824	91	38	73.7
3 X 2	RB4832	91	38	79.25
3 X 2-1/2	RB4840	91	38	57.78
4 X 1-1/2	RB6424	116	44	110.56
4 X 2	RB6432	116	44	125.34
4 X 2-1/2	RB6440	116	44	142.04
4 X 3	RB6448	116	44	129.06

*Pressure rating up to 20 BAR (300 PSI)

*Female threads are BSPP (Parallel) to ISO 228-1

*Male threads are BSPT (Taper) to ISO 7-1

*316 CF8M stainless steel

*Investment castings

*Sizes 1/8" to 4"

****DIMENSIONS SUBJECT TO CHANGE, PLEASE CONTACT US IF CRITICAL****