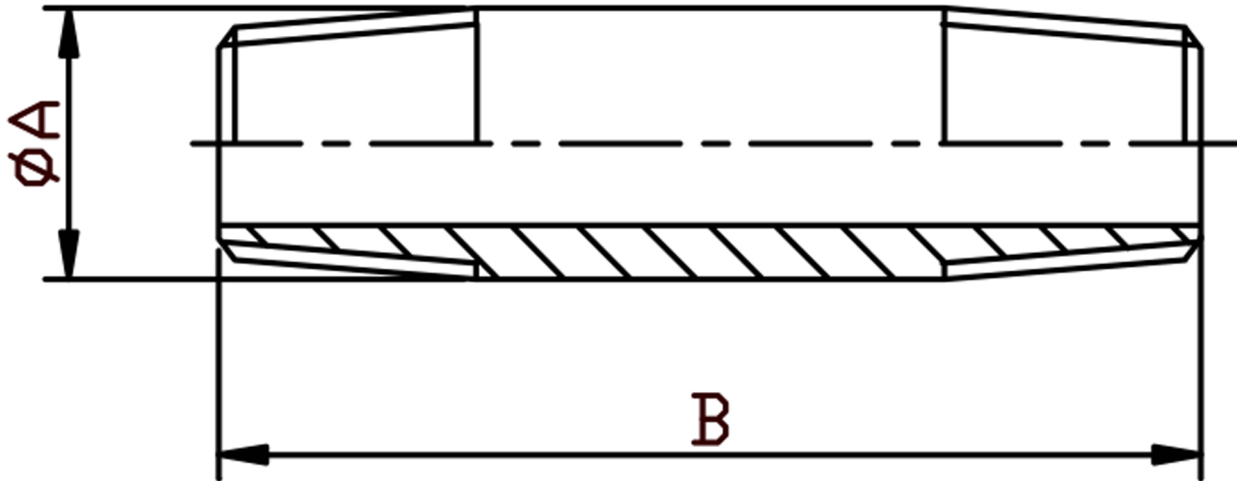


SCH80S BARREL NIPPLE NPT 316L



SIZE	PART No	A	B	Kg/100
1/8	3BN02N	10.2	30	1.2
1/4	3BN04N	13.5	30	1.9
3/8	3BN06N	17.2	40	3.7
1/2	3BN08N	21.3	60	7.9
3/4	3BN12N	26.9	60	11.2
1	3BN16N	33.7	60	15.5
1-1/4	3BN20N	42.4	80	32
1-1/2	3BN24N	48.3	80	40
2	3BN32N	60.3	100	67

*Pressure rating up to 200 BAR (3000 PSI)

*Male threads are NPT to ANSI B2.1

*316L stainless steel

*Manufactured from pipe

*Sizes 1/8" to 2"

DIMENSIONS SUBJECT TO CHANGE, PLEASE CONTACT US IF CRITICAL