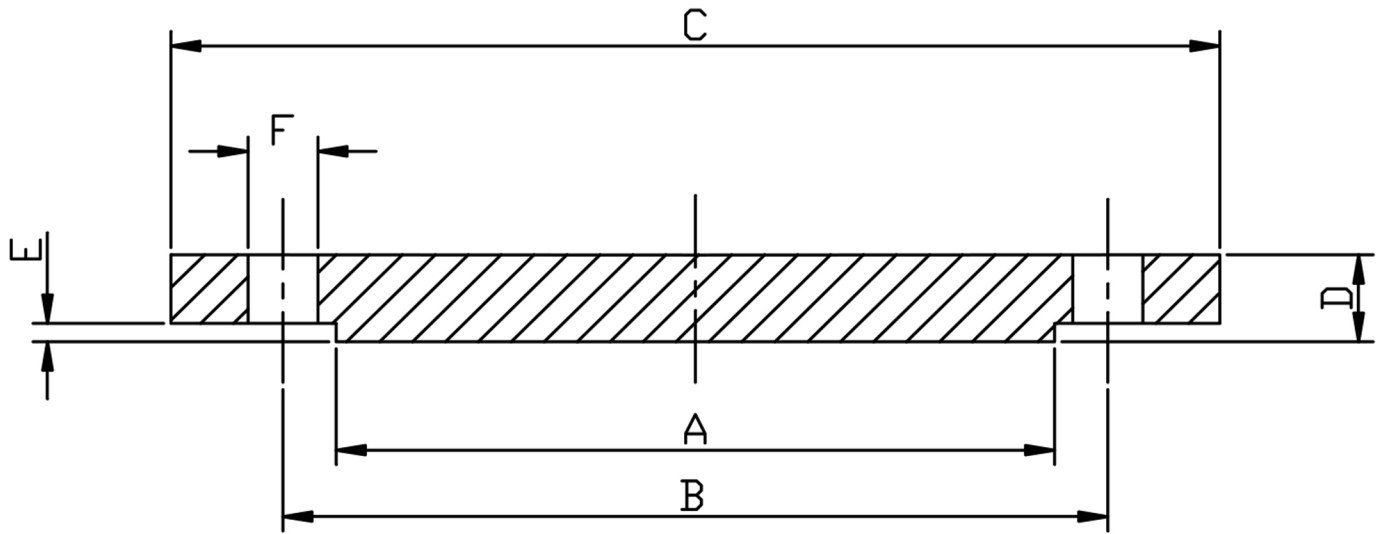


PN6/8 BLANK TYPE 05B 316/L



PIPE SIZE	DN	PART No 316/L	A	B	C	D	E	F	BOLT SIZES	Kg EACH
1/2	15	F680.5	40	55	80	12	2	11	4XM10	0.44
3/4	20	F680.75	50	65	90	14	2	11	4XM10	0.66
1	25	F681.0	60	75	100	14	2	11	4XM10	0.83
1 1/4	32	F681.25	70	90	120	16	2	14	4XM12	1.19
1 1/2	40	F681.5	80	100	130	16	3	14	4XM12	1.41
2	50	F682.0	90	110	140	16	3	14	4XM12	1.64
2 1/2	65	F682.5	110	130	160	16	3	14	4XM12	2.16
3	80	F683.0	128	150	190	18	3	18	4XM16	3.47
4	100	F684.0	148	170	210	20	3	18	4XM16	4.27
5	125	F685.0	178	200	240	20	3	18	8XM16	6.17
6	150	F686.0	202	225	265	22	3	18	8XM16	7.58

*ASTM A182 316/L
 *TO EN1092-1 (WAS BS4504)
 *DIMENSIONS IN MM
 *WEIGHTS IN Kg EACH

DIMENSIONS SUBJECT TO CHANGE, PLEASE CONTACT US IF CRITICAL