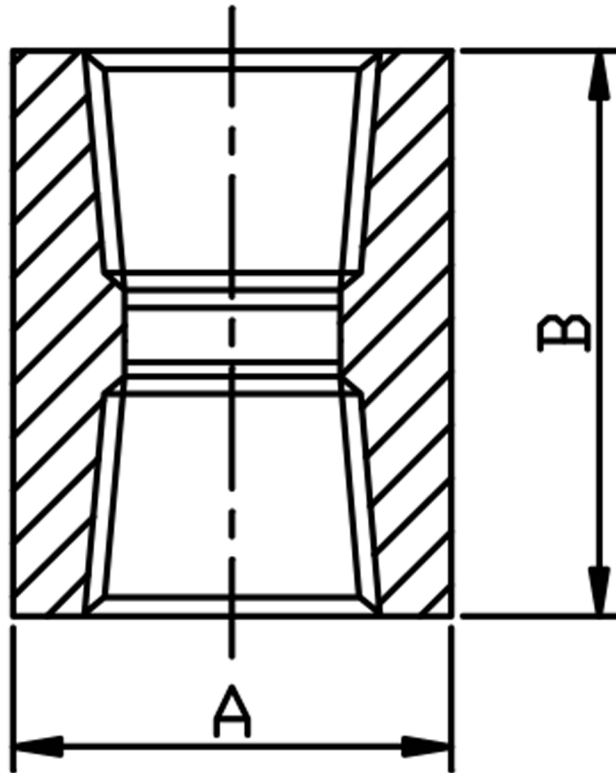


### FULL COUPLING BSPT 316L



SIZE	PART No	A	B	Kg/100
1/8	3S02T	16	32	3.5
1/4	3S04T	19	35	5.7
3/8	3S06T	22	38	6.0
1/2	3S08T	29	48	12.8
3/4	3S12T	35	51	20.8
1	3S16T	45	60	42.8
1-1/4	3S20T	57	67	72.4
1-1/2	3S24T	64	79	101.2
2	3S32T	76	86	140.3

\*BSPT threaded to ISO 7-1

\*Dimensions to ANSI B16.11/BS3799

\*3000 LB rating

\*Sizes 1/8" to 2"

\*316L stainless steel

\*Larger sizes are available

**\*\*DIMENSIONS SUBJECT TO CHANGE, PLEASE CONTACT US IF CRITICAL\*\***