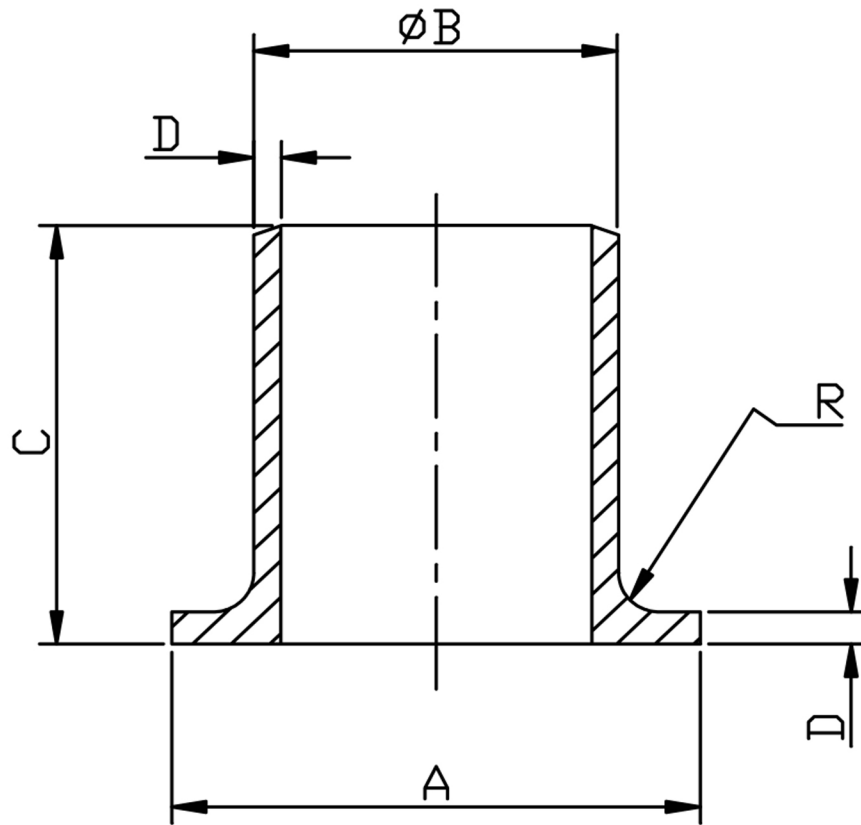


STUB END SCH10 304/L (MSS TYPE A)



SIZE N.B	PART NUMBER	A	B	C	D	R	Kg/100
1/2	BSE08/1-304	34.9	21.3	50.8	2.11	3.2	7.7
3/4	BSE12/1-304	42.8	26.6	50.8	2.11	3.2	8.6
1	BSE16/1-304	50.8	33.4	50.8	2.77	3.2	14.0
1 1/4	BSE20/1-304	63.5	42.1	50.8	2.77	4.8	20.8
1 1/2	BSE24/1-304	73.0	48.1	50.8	2.77	6.4	24.9
2	BSE32/1-304	92.0	60.3	63.5	2.77	7.9	37.6
2 1/2	BSE40/1-304	104.8	73.0	63.5	3.05	7.9	47.1
3	BSE48/1-304	127.0	88.9	63.5	3.05	9.5	63.8
4	BSE64/1-304	157.2	114.3	76.2	3.05	11.1	97.8
5	BSE80/1-304	185.7	141.3	76.2	3.40	11.1	123.7
6	BSE96/1-304	215.9	168.3	88.9	3.40	12.7	195.0
8	BSE128/1-304	268.7	219.08	101.6	3.76	12.7	261.0
10	BSE160/1-304	324.0	273.0	122.5	4.19	12.7	454.0

- *Conforming to MSS SP-43
- *304/L Stainless steel Welded
- *Schedule 10S Wall thickness
- *Sizes 1/2" to 10" Nominal Bore

DIMENSIONS SUBJECT TO CHANGE, PLEASE CONTACT US IF CRITICAL