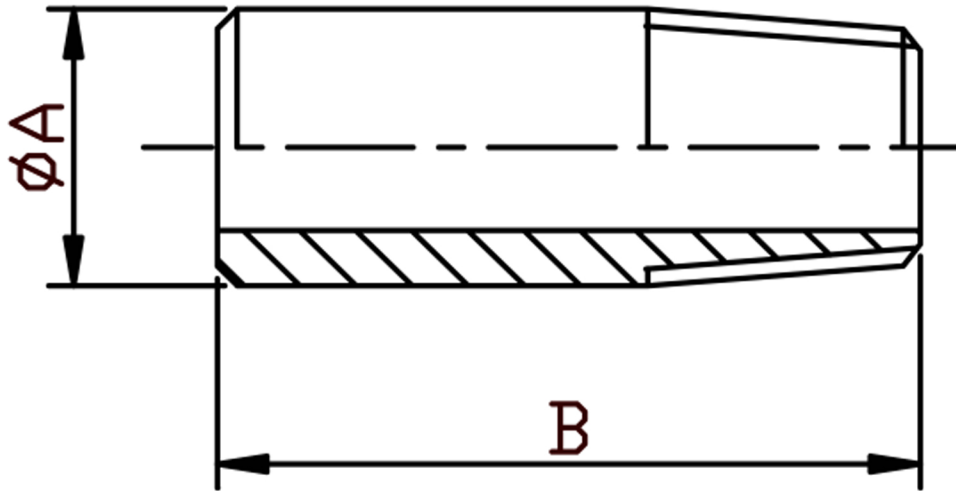


WELD NIPPLE BSPT 316L



SIZE	PART No	A	B	Kg/100
1/8	WN02	10.2	30	1.29
1/4	WN04	13.5	30	2.05
3/8	WN06	17.2	30	2.71
1/2	WN08	21.3	35	4.44
3/4	WN12	26.9	40	6.49
1	WN16	33.7	40	9.86
1-1/4	WN20	42.4	50	15.8
1-1/2	WN24	48.3	50	18.16
2	WN32	60.3	50	25.94
2-1/2	WN40	76.1	60	39.76
3	WN48	88.9	70	58.51
4	WN64	114.3	80	97.42
5	WN80	141.3	100	150.05
6	WN96	168.28	100	225.02

- *Pressure rating up to 50 BAR (750 PSI)
- *Male threads are BSPT (Taper) to ISO 7-1
- *316L stainless steel
- *Manufactured from pipe
- *Sizes 1/8" to 4"

DIMENSIONS SUBJECT TO CHANGE, PLEASE CONTACT US IF CRITICAL