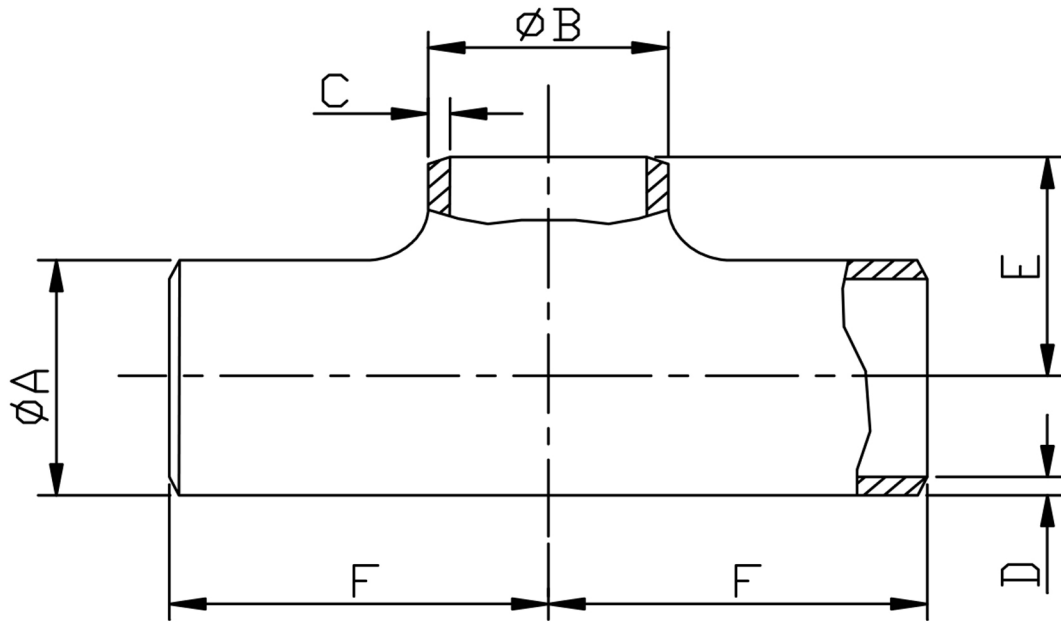


### REDUCING TEE SCH 10 304/L



SIZE	PART No	A OD	B OD	C	D	E	F	Kg/100
3/4 X 1/2	BRT1208/1-304	26.6	21.3	2.11	2.11	28.7	28.7	12.3
1 X 1/2	BRT1608/1-304	33.4	21.3	2.11	2.77	38.1	38.1	20.4
1 X 3/4	BRT1612/1-304	33.4	26.6	2.11	2.77	38.1	38.1	21.2
1-1/4 X 1	BRT2016/1-304	42.1	33.4	2.77	2.77	47.8	47.8	33.9
1-1/2 X 1/2	BRT2408/1-304	48.3	21.3	2.11	2.77	57.2	57.2	38.9
1-1/2 X 3/4	BRT2412/1-304	48.3	26.6	2.11	2.77	57.2	57.2	42.5
1-1/2 X 1	BRT2416/1-304	48.3	33.4	2.77	2.77	57.2	57.2	46.1
1-1/2 X 1-1/4	BRT2420/1-304	48.3	42.1	2.77	2.77	57.2	57.2	48.2
2 X 1/2	BRT3208/1-304	60.3	21.3	2.11	2.77	50.8	63.5	56.4
2 X 3/4	BRT3212/1-304	60.3	26.6	2.11	2.77	50.8	63.5	63.9
2 X 1	BRT3216/1-304	60.3	33.4	2.77	2.77	50.8	63.5	72.5
2 X 1-1/4	BRT3220/1-304	60.3	42.1	2.77	2.77	57.2	63.5	74.7
2 X 1-1/2	BRT3224/1-304	60.3	48.3	2.77	2.77	60.5	63.5	76.6
2-1/2 X 1-1/2	BRT4024/1-304	73.0	48.3	2.77	3.05	66.8	76.2	118.0
2-1/2 X 2	BRT4032/1-304	73.0	60.3	2.77	3.05	69.9	76.2	121.0
3 X 1	BRT4816/1-304	88.9	33.4	2.77	3.05	73.2	79.5	139.9
3 X 1-1/2	BRT4824/1-304	88.9	48.3	2.77	3.05	73.2	79.5	160.0
3 X 2	BRT4832/1-304	88.9	60.3	2.77	3.05	76.2	85.9	163.0
3 X 2-1/2	BRT4840/1-304	88.9	73.0	3.05	3.05	82.6	85.9	169.0
4 X 1-1/2	BRT6424/1-304	114.3	48.3	2.77	3.05	88.9	104.9	234.6
4 X 2	BRT6432/1-304	114.3	60.3	2.77	3.05	88.9	104.9	253.0
4 X 2-1/2	BRT6440/1-304	114.3	73.0	3.05	3.05	95.3	104.9	259.0
4 X 3	BRT6448/1-304	114.3	88.9	3.05	3.05	98.6	104.9	261.0
5 X 3	BRT8048/1-304	141.3	88.9	3.05	3.40	111.3	124.0	417.0
5 X 4	BRT8064/1-304	141.3	114.3	3.05	3.40	117.6	124.0	424.0
6 X 3	BRT9648/1-304	168.3	88.9	3.05	3.40	124.0	143.0	575.0
6 X 4	BRT9664/1-304	168.3	114.3	3.05	3.40	130.3	143.0	585.0
6 X 5	BRT9680/1-304	168.3	141.3	3.40	3.40	136.7	143.0	592.0
8 X 4	BRT12864/1-304	219.8	114.3	3.05	3.76	155.5	178.0	1345.0
8 X 5	BRT12880/1-304	219.8	141.3	3.40	3.76	161.9	178.0	1377.0
8 X 6	BRT12896/1-304	219.8	168.28	3.40	3.76	168.3	178.0	1408.0
10 x 6	BRT16096/1-304	273.0	168.3	3.40	4.19	194.0	216.0	2630.0
10 x 8	BRT160128/1-304	273.0	219.8	3.76	4.19	203.0	216.0	2630.0

\*Conforming to ASTM A403, ANSI B16.9, ANSI B16.28  
 \*304/L Stainless steel Welded  
 \*Schedule 10S Wall thickness  
 \*Sizes 1/2" to 10" Nominal Bore

\*\*DIMENSIONS SUBJECT TO CHANGE, PLEASE CONTACT US IF CRITICAL\*\*