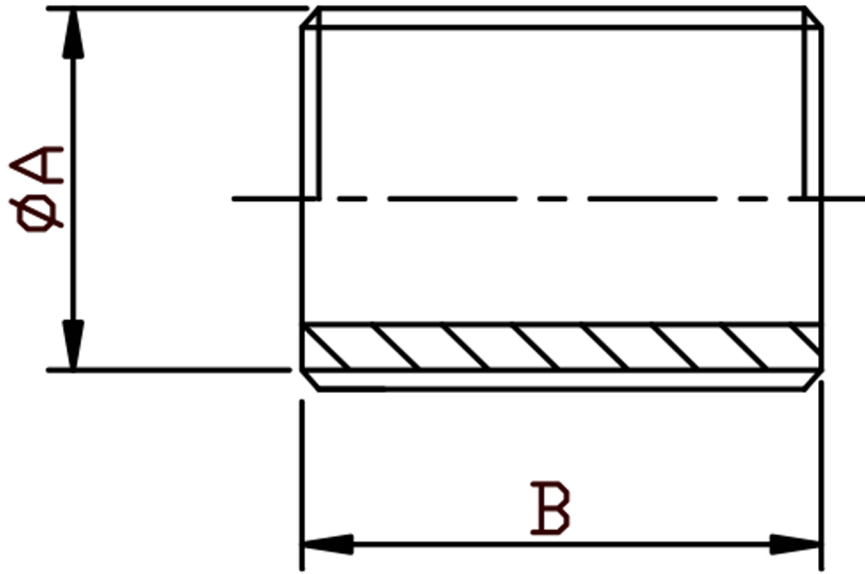


PARALLEL NIPPLE MALE BSPP 316L



SIZE	PART No	A	B	Kg/100
1/8	PN02	10.2	16	0.42
1/4	PN04	13.5	18	0.76
3/8	PN06	17.2	22	1.33
1/2	PN08	21.3	25	2.07
3/4	PN12	26.9	30	3.53
1	PN16	33.7	35	5.02
1-1/4	PN20	42.4	38	8.74
1-1/2	PN24	48.3	38	12.35
2	PN32	60.3	45	14.2
2-1/2	PN40	76.1	55	23.58
3	PN48	88.9	60	36.74
4	PN64	114.3	70	50.82

- *Pressure rating up to 50 BAR (750 PSI)
- *Male threads are BSPP (Parallel) to ISO 228-1
- *316L stainless steel
- *Manufactured from pipe
- *Sizes 1/8" to 4"

DIMENSIONS SUBJECT TO CHANGE, PLEASE CONTACT US IF CRITICAL