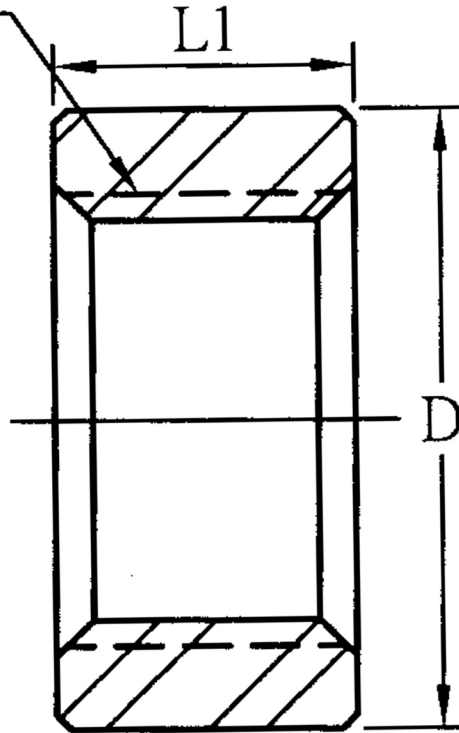


### HALF COUPLING BSPP 316L

BSPP , ISO 228-1



SIZE	PART No	D	L1	Kg/100
1/8	<b>3HS02P</b>	16	10	2.0
1/4	<b>3HS04P</b>	19	13	2.9
3/8	<b>3HS06P</b>	22	15	3.0
1/2	<b>3HS08P</b>	28	16	6.6
3/4	<b>3HS12P</b>	35	18	10.8
1	<b>3HS16P</b>	44	21	21.9
1-1/4	<b>3HS20P</b>	57	24	36.7
1-1/2	<b>3HS24P</b>	64	24	51.0
2	<b>3HS32P</b>	76	27	71.5

\*BSPP threaded to ISO 228-1

\*3000 LB rating

\*Sizes 1/8" to 2"

\*316L stainless steel

\*Larger sizes are available

\*\*DIMENSIONS SUBJECT TO CHANGE, PLEASE CONTACT US IF CRITICAL\*\*