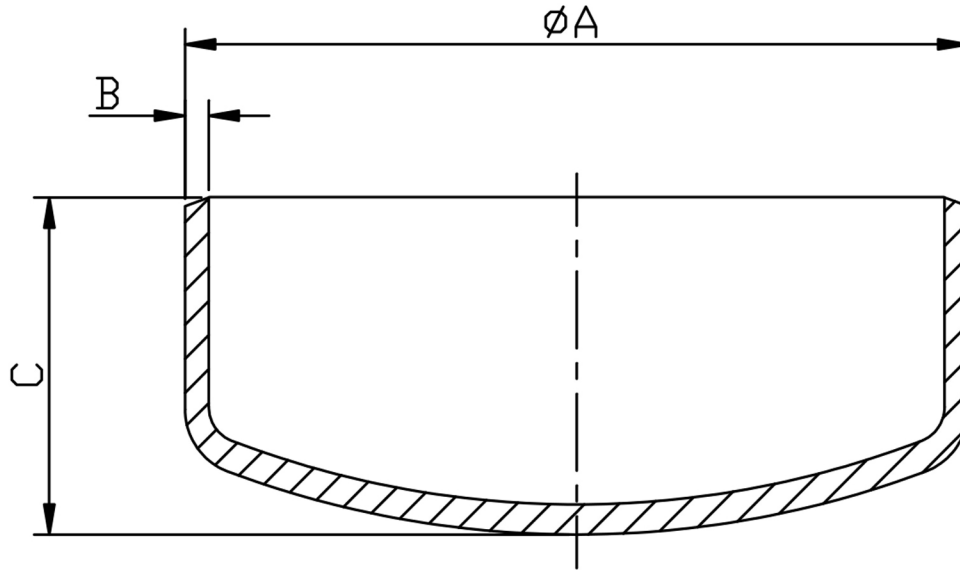


### CAP SCH10 304/L



SIZE N.B	PART NUMBER	A	B	C	Kg/100
1/2	BC08/1-304	21.3	2.11	25.4	4.0
3/4	BC12/1-304	26.6	2.11	25.4	5.2
1	BC16/1-304	33.4	2.77	38.1	9.0
1 1/4	BC20/1-304	42.1	2.77	38.1	11.3
1 1/2	BC24/1-304	48.1	2.77	38.1	13.0
2	BC32/1-304	60.3	2.77	38.1	16.8
2 1/2	BC40/1-304	73.0	3.05	50.4	24.2
3	BC48/1-304	88.9	3.05	63.5	36.2
4	BC64/1-304	114.3	3.05	76.2	58.5
5	BC80/1-304	141.3	3.40	88.9	97.8
6	BC96/1-304	168.3	3.40	101.6	135.0
8	BC128/1-304	219.08	3.76	127.0	275.0
10	BC160/1-304	273.0	4.19	152.4	445.0

\*Conforming to ASTM A403, ANSI B16.9, ANSI B16.28

\*304/L Stainless steel seamless

\*Schedule 10S Wall thickness

\*Sizes 1/2" to 10" Nominal Bore

\*\*DIMENSIONS SUBJECT TO CHANGE, PLEASE CONTACT US IF CRITICAL\*\*