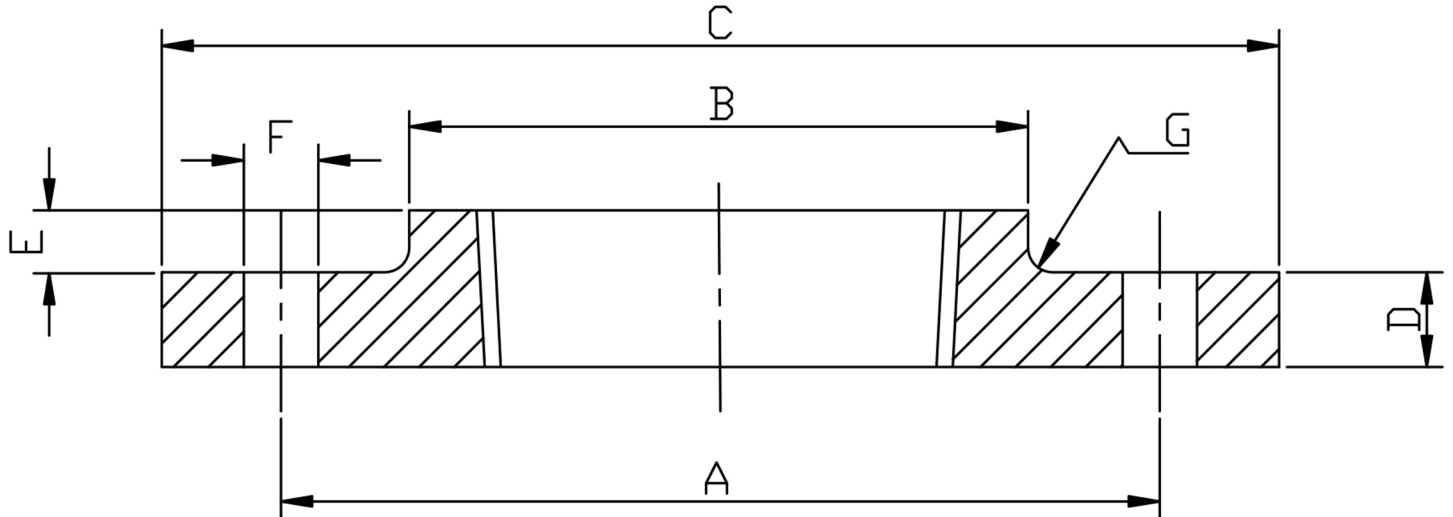


### TABLE E THREADED 316/L



PIPE SIZE	DN	PART No 316/L	A	B	C	D	E	F	G	BOLT SIZES	Kg EACH
1/2	15	FESP0.5	66.68	33.34	95.25	6.35	9.53	14.29	1.6	4XM12	0.40
3/4	20	FESP0.75	73.03	38.10	101.60	6.35	11.11	14.29	1.6	4XM12	0.59
1	25	FESP1.0	82.55	47.63	114.30	7.14	11.11	14.29	1.6	4XM12	0.70
1 1/4	32	FESP1.25	87.31	55.56	120.65	7.94	11.11	14.29	1.6	4XM12	0.79
1 1/2	40	FESP1.5	98.43	61.91	133.35	8.73	12.70	14.29	1.6	4XM12	1.08
2	50	FESP2.0	114.30	74.61	152.40	9.53	12.70	17.46	1.6	4XM16	1.41
2 1/2	65	FESP2.5	127.00	90.49	165.10	10.32	15.88	17.46	1.6	4XM16	1.82
3	80	FESP3.0	146.05	106.36	184.15	11.11	15.88	17.46	1.6	4XM16	2.48
4	100	FESP4.0	177.80	133.35	215.90	12.70	19.01	17.46	3.2	8XM16	3.45

\*ASTM A182 316/L STAINLESS STEEL  
 \* TO BS10  
 \*DIMENSIONS IN MM  
 \*WEIGHTS IN Kg EACH  
 \*THREADED BSPP TO ISO 228-1

\*\*DIMENSIONS SUBJECT TO CHANGE, PLEASE CONTACT US IF CRITICAL\*\*