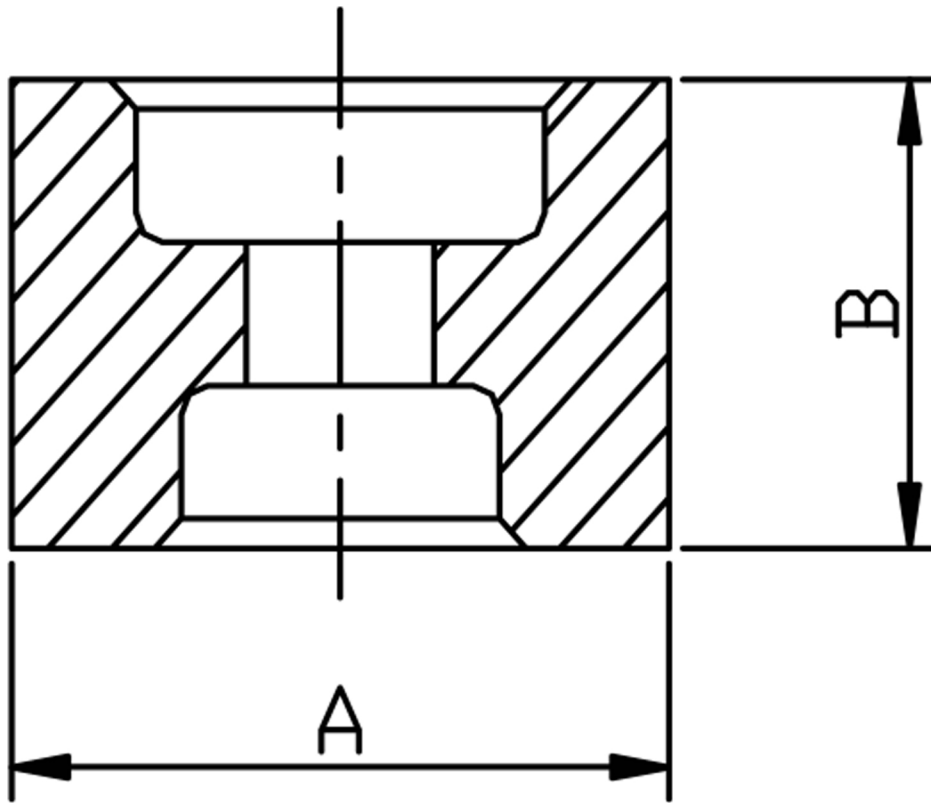


### REDUCING COUPLING SOCKET WELD 316L



SIZE	PART No	A	B	Kg/100
1/4 X 1/8	3RS0402SW	22	25	5.0
3/8 X 1/4	3RS0604SW	25	25	6.4
1/2 X 1/4	3RS0804SW	31	29	12.8
1/2 X 3/8	3RS0806SW	31	29	12.6
3/4 X 3/8	3RS1206SW	36	35	17.8
3/4 X 1/2	3RS1208SW	36	35	16.5
1 X 1/2	3RS1608SW	45	38	32.0
1 X 3/4	3RS1612SW	45	38	29.1
1-1/4 X 1	3RS2016SW	55	38	41.3
1-1/2 X 1	3RS2416SW	60	38	49.6
1-1/2 X 1-1/4	3RS2420SW	60	38	45.0
2 X 1-1/4	3RS3220SW	75	51	96.7
2 X 1-1/2	3RS3224SW	75	51	87.4

\*Socket weld ends (SW)

\*Dimensions to ANSI B16.11/BS3799

\*3000 LB rating

\*Sizes 1/8" to 2"

\*316L stainless steel

\*Larger sizes are available

\*\*DIMENSIONS SUBJECT TO CHANGE, PLEASE CONTACT US IF CRITICAL\*\*