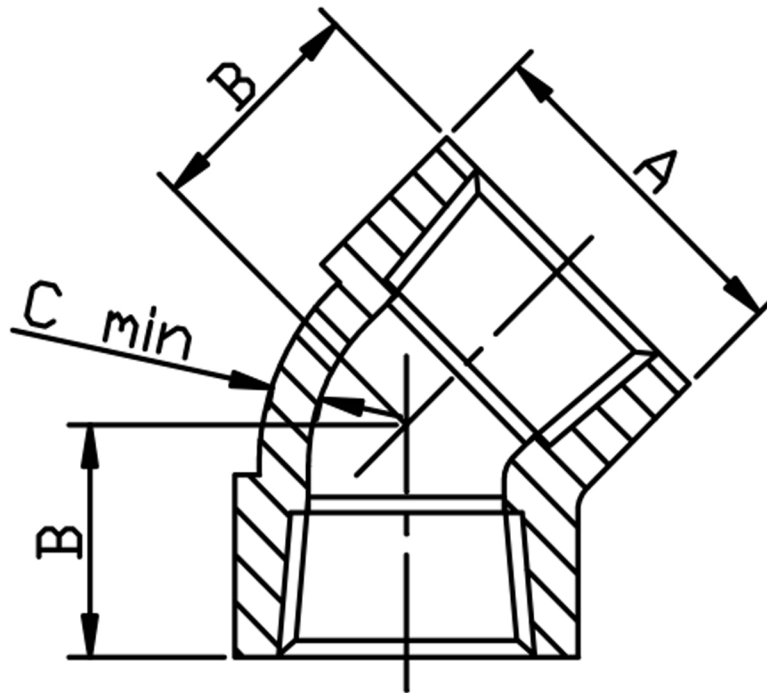


45° ELBOW NPT 316L



SIZE	PART No	A	B	C	Kg/100
1/4	3EA04N	25	19	3.5	10.8
3/8	3EA06N	33	22	3.5	25.4
1/2	3EA08N	38	25	4.0	32.9
3/4	3EA12N	46	29	4.5	51.4
1	3EA16N	56	33	5.0	85.2
1-1/4	3EA20N	62	35	5.5	96.1
1-1/2	3EA24N	75	43	5.5	184.5
2	3EA32N	84	45	7.0	223.9

*NPT threaded to ANSI B2.1

*Dimensions to ANSI B16.11/BS3799

*3000 LB rating

*Sizes 1/8" to 2"

*316L stainless steel

*Larger sizes are available

DIMENSIONS SUBJECT TO CHANGE, PLEASE CONTACT US IF CRITICAL